



PRODUCT CATALOG 2019-2020



MZIK

AUTOMOTIVE INDUSTRY

- CLUTCHS ACTUATORS
- FORKS OF CLUTCH
- FORKS FOR GEAR SHIFT
- HOUSING FOR CLUTCHS
- SHAFT AND CLUTCH FORKS
- REPAIR SET, FORK CLUTCS
- HOUSING SET AND BEARING (PLATEAU)

www.mzkrolamentos.com.br

exportacao@mzkrolamentos.com.br

Phone: +55 16 3969-8877



AUTOMOTIVE INDUSTRY

CLUTCH HOUSINGS | FORKS FOR GEAR SHIFT AND CLUTCH | PLATEAU SETS AND ACTUATORS

MZK BEARING INDUSTRY



CATALOG NOMENCLATURE - PRICE LIST

- AC - COMPLETE HOUSING AUTO CENTERING
- TB - HOUSING COMPLETE WITH RADIAL CONT. (TUBULAR)
- RCS - BEARING WITHOUT HOUSING
- RCL - COMPLETE HOUSING FOR UTILITY VEHICLES
- RCH - COMPLETE HOUSING FOR HEAVY LINE
- RCY - HYDRAULIC ACTUATORS HEAVY LINE AND UTILITY VEHICLES
- SM - COMPLETE HOUSING
- KTA - CLUTCH HOUSING SETS
- KTG - CLUTCH FORKS SETS
- EXG - SHAFT CLUTCH FORK
- GDL - CLUTCH FORKS
- GCL - FORKS OF GEAR SHIFT STEEL INSERT
- PGC - TABLE (STEEL)

BEARINGS: TB = BEARINGS TUBULAR RADIAL CONTACT

OTHER BEARINGS IN FORGED STEEL OF ANGULAR CONTACT.

FORKS: FORGED STEEL, MACHINED WITH INDUCTION TREATMENT.



EQUIVALENCE TABLE

AGRALE	NWO	SACHS	EATON	ORIGINAL	PG
RCH 5010			1271010		7
RSC 5019	RDS 1009			6003.033.035.001	7
RCL 5035	RDS 1035	3367	125802	6003.033.035.001	7
RCH 5040		3040	125919	2PO141165	7
RCH 5303	RDL 1303			6013.033.035.001	7
RCH 5347	RDL 1428	3347	125783	6020.003.016.005	8
RCH 5360AC	RDL 1360AC	3359			8
RCH 5365	RDL 1365	3389	125790	6007.0030.48005	8
RCH 5399	RDL 1431	3399		6025.0030.25005	8
RCH 5400AC		3400	125910		8
RCH 5563			125563 / 125715		9

CBT	NWO	SACHS	EATON	ORIGINAL	PG
RCS 5015	RDS 1015			090.0602.021	9

CHRYSLER	NWO	SACHS	EATON	ORIGINAL	PG
RCS 5009	RDS 1009	3367		AL 2116 T	9
RCH 5323	RDL 1323	3326	125800		9

FORD	NWO	SACHS	EATON	ORIGINAL	PG
RCS 5009	RDS 1009	3367		02987123	10
RSC 5016	RDS 1016			3.585.341	10
RCH 5010			1271010	F 817 A 548 AC	10
RCH 5029			1271029	F 81*7548 AC	10
RCL 5035	RDS 1035	3367	125802	82 TU 7548 A	10
RCL 5037	RDL 1037	3373		2SK 141.165	11
RCL 5038	RDL 1038	3387	125801	2 SL 141165	11
RCH 5040		3040	125919	2ZO 141165	11
RCH 5348 SM	RDL 1348	3358		2Z 0141707 A	11
RCH 5349 SM	RDL 1349	3346		E 3HN 7580 AA	11
RCH 5350	RDL 1350			BG 1X 7561-AA	12
RCH 5360 SM	RDL 1360 SM	3348	125562	BF6X7A605 A	12
RCH 5360 AC	RDL 1360 AC	3359		BF7X7A605 A	12
RCH 5360	RDL1360	3359		BF7X7A605 A	12
RCH 5431 AC		3100 / 3431	125755	457548-AB	12
RCH 5529 AC		3100 / 3431	125755	457548-AB	13
RCH5562 SM			125562		13
RCH 5563			125563		13
RCH 5650 SM			125650		13
RCH 5713			125713		13
RCH 5716			125716		14
RCH 5717SM			125717		14

GM	NWO	SACHS	EATON	ORIGINAL	PG
RCL 5035	RDS 1035	3367	125802	94.609.464	14
RCL 5036	RDL 1036			94.609.464	14
RCL 5061	RDL 1061			93D2934	14

GM	NWO	SACHS	EATON	ORIGINAL	PG
RCH 5360AC	RDL 1360AC	3359			15
RCH 5563			125563		15

IVECO	NWO	SACHS	EATON	ORIGINAL	PG
RCH-5320 AC	RDL 1320	3325		7168964	15
RCH 5323	RDL 1326	3362	125800	7145819	15
RCH 5336 AC	RDL 1366	3366	125652	1900756	15
RCH 5360 AC	RDL 1360 AC				16
RCH 5391 AC	RDL 1360AC	3391		50310133	16
RCH 5399		3399			16
RCH 5400AC		3400	125910	5949890688	16
RCH 5401		3401			16
RCH 5498AC		3398			17

JOHN DEERE	NWO	SACHS	EATON	ORIGINAL	PG
RCS 5009	RDS 1009	3367		AL 2216 T	17

MASSEY	NWO	SACHS	EATON	ORIGINAL	PG
RCS 5016	RDL 1016			3585341 M1	17

MERCEDES	NWO	SACHS	EATON	ORIGINAL	PG
RCS 5007	RDS 1007			000 254 0020	17
RCH 5020	RDL 1020	3384		320 250 0015	18
RCS 5020	RDS 1020	3384		320 250 00 15	18
RCH 5021	RDL 1021	3385		335 254 00 10	18
RCS 5021	RDS 1021	3385		335 254 00 10	18
RCH 5300	RDL 1300	3358		321 250 05 15	18
RCH 5305	RDL 1305	3324		000 250 42 15	19
RCH 5305 TB	RDL 1305	3324		000 250 42 15	19
RCH 5306	RDL 1306	3330		001 250 03 15	19
RCH 5307	RDL 1307	3327		000 250 19 15	19
RCH 5308	RDL 1308	3310		000 250 17 15	19
RCH 5308 TB	RDL 1308	3310		000 250 17 15	20
RCH 5311	RDL 1311	3329		000 250 76 15	20
RCH 5312	RDL 1312			340 250 02 10	20
RCH 5320 AC	RDL 1320	3325	125807	001 250 22 15	20
RCH 5321AC	RDL 1321	3345	125653	001 250 92 15	20
RCH 5324AC	RDL 1324	3383		001 250 07 15	21
RCH 5326	RDL 1326	3326		001 250 95 15	21
RCH 5328	RDL 1328			000 250 7015	21
RCH 5331	RDL 1331			001 250 09 15	21
RCH 5332 AC	RDL 1332	3345	125653	001 250 05 15	21
RCH 5337	RDL 1337	3337 / 3338		001 250 04 15	22
RCH 5338AC	RDL 1338			001 250 06 15	22
RCH 5356 AC	RDL 1356	3377	125634 / 125635	002 250 41 15	22
RCH 5378 AC	RDL 1378	3388		001 250 06 15	22
RCH 5390 AC	RDL 1424	3390	125946	002 250 63 15	22
RCH 5397 AC	RDL 1397	3309	125806	001 250 99 15	23
RCH 5635			125635		23
RCH 5654			125654		23

ACTUATOR	NWO	SACHS	EATON	ORIGINAL	PG
RCY 7843	RDL 1375	3361		002 250 66 15	23
RCY 7844				002 255 25 08	23

SCANIA	NWO	SACHS	EATON	ORIGINAL	PG
RCS 5015	RDS 1015			133011 / 215131	24

SCANIA	NWO	SACHS	EATON	ORIGINAL	PG
RCH5314 AC	RDL 1314	3353		1.386.160	24
RCH5329 AC	RDL 1329	3352	125708	1.319.344	24
RCH 5372	RDL 1372	3075 / 3375		352750 1.367,604	24
RCH 5422 AC	RDL 1422	3350	125709	1.728.165 1.499.770	24
RCH 5522 AC				1493990	25
RCH 5522				1493990	25
RCH 5722 AC				VALEO 830010	25

TOYOTA	NWO	SACHS	EATON	ORIGINAL	PG
RCS 5007	RDS 1007			900236301	25
RCL 5007	RDL 1007			900236301	25

VALTRA	NWO	SACHS	EATON	ORIGINAL	PG
RCS 5019	RDS 1019			164480 / 164481	25
RCH 5200	RDL 1600			817 81200	26

VOLVO	NWO	SACHS	EATON	ORIGINAL	PG
RCH 5315	RDL 1315	3355		1655289/ 166833	26
RCH 5316	RDL 1316	3368		267156	26
RCH 5317	RDL 1317	3374		1655287	26
RCH 5318	RDL 1318	3372		1655288	26
RCH 5319	RCH 1319	3060 / 3360		1672944 / 1655843	27
RCH 5322	RDL 1322	3386		1527695	27
RCH 5325	RDL 1325	3363	125637	1655825	27
RCH 5352	RDL 1352	3365		1668930 / 1668938	27
RCH 5360 AC	RDL 1360 AC	3359			27
RCH 5394	RDL 1394	3308	125643	1672964	28
RCH 5396 AC	RDL 1396		125641	20722523	28
RCH 5563			125563 / 125715		28
RCH 5567		KIT 6295			28
RCH 5655			125655		28
RCH 5716			125716		29

V.W	NWO	SACHS	EATON	ORIGINAL	PG
RCS 5009	RDS 1009	3367		2991380	29
RCL 5035	RDS 1035	3307 / 3367	125802	82TU7548-A	29
RCL 5037	RDL 1037	3373	125804	2SK 141 165	29
RCH 5040		3040	125919	OR 2 Z O 141165	29
RCH 5323	RDL 1323	3362		2T2 141265	30
RCH 5349 SM	RDL 1349	3346		E 3 HN 7580 AA	30
RCH 5350	RDL 1350			2TB 141165	30
RCH 5360 AC	RDL1360 AC	3359		2 RP 141037 C	30
RCH 5360	RDL1360	3359		2 RP 141037 C	30
RCH 5360 SM	RDL 1360 SM	3348		2ZO 141707 A	31
RCH5363 SM	RDL 1363			2RP 141037 B	31
RCH 5366 AC	RDL 1366	3396	125710	2T2 141165 A	31
RCH 5380	RDL 1380	3371		2991380	31
RCH 5398	RDL 1398			2T2 141165	31
RCH 5498		3398	125944		32
RCH-5562 SM			125562		32
RCH 5563			125563		32
RCH 5565		3739	125655	2T2 141 165 K	32
RCH 5566		3344	125916		32
RCH 5597	RDL 1427 / 1426	3397	125793	2T2 141 165 E 2T2 141165 H	33
RCH 5650SM			125650		33
RCH 5716	RDL 1362		125716	2RP 141037 C	33
RCH 5717 SM			125717		33
RCH 5739		3739			33

AGRALE CLUTCH FORKS	EATON	ORIGINAL	PG
GDL350.05	997078		34
EXG 351		TJG 141865	34
EXG 352		TJG 141863	34

FIAT CLUTCH FORKS	EATON	ORIGINAL	PG
GDL350.24		1489891080	34

FORD CLUTCH FORKS	EATON	ORIGINAL	PG
GDL 350.05	997078	TJG 141861	34
EXG 351		TJG 141865	34
EXG 352		TJG 141863	34
GDL 350.07		TJG 141857	34
GDL 350.13		BE 2Y 7515 A	34
GDL 350.29	125737	BH1X 7544 BA	34
GDL 350.32	125596	BA1X 7544 AA	34

HYUNDAI CLUTCH FORKS	EATON	ORIGINAL	PG
GDL 350.16		4144344001	34

MITSUBISHI CLUTCH FORKS	EATON	ORIGINAL	PG
GDL 350.16		4144344001	34

GM CLUTCH FORKS	EATON	ORIGINAL	PG
GDL 350.06	125731 125743	TJG 141861	35
KTG 350.06-A			35
EXG 351		TJG 141865	35
EXG352		TJG 141863	35
GDL 350.08		09302935	35
GDL 350.09		00839239	35
GDL 350.10		007363694	35

IVECO CLUTCH FORKS	EATON	ORIGINAL	PG
GDL 350.06	997152 125743	503101155	35
KTG 350.06-A			35
EXG 351		TJG 141865	35
EXG352		TJG 141863	35

MERCEDES BENZ CLUTCH FORKS	EATON	ORIGINAL	PG
GDL 350.01		327 250 1213	36
GDL 350.02		352 250 01 13	36
GDL 350.03		381 254 02 08	36
GDL 350.04		970 254 03 08	36
GDL 350.04.A		000 254 00 17	36
EXG 356		679 254 01 06	36
GDL 350.11		386 250 00 13	36
KTG 350.11.A		382 250 01 13	36

EXG 355		386 254 00 06	36
GDL 350.12		388 250 05 13	37
KTG 350.12.A			37
EXG 353		388 254 00 06	37
EXG 354		388 254 01 06	37
GDL 350.19		655 254 07 08	37
KTG 350.19.A			37
KTG 350.19.B			37
EXG 357		655 254 02 06	37

MBB GEAR SHIFT FORKS	EATON	ORIGINAL	PG
GCL 423.01		344 260 01 30 321 260 2630	38
GCL 423.03		302 265 06 02	38
GCL 445.02		321 260 27 30	38
GCL 445.04		302 265 07 02 384 265 04 02	38
PGC 400.00		385 265 00 49	38
GCL 523.01		344 260 01 30 321 260 26 30	38
GCL 523.03		302 265 06 02 384 265 06 02	38
GCL 545.02		321 260 27 30	38
GCL 545.04		302 265 07 02 384 265 04 02	38
GCL 401-R		345 260 04 30 383 260 07 30	38

SCÂNIA CLUTCH FORKS	EATON	ORIGINAL	PG
GDL 350.27		1479577 173306	39
KTG 350.17.A		1733479 1335485	39
KTG 350.27.B			39

VOLVO CLUTCH FORKS	EATON	ORIGINAL	PG
GDL 350.14	127743	21333869	39
KTG 350.14.A			39
EXG 351		TJG 141865	39
EXG 352		TJG 141863	39

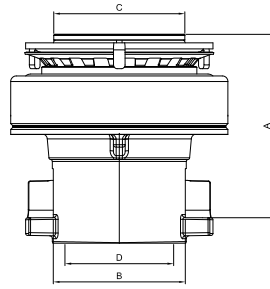
V.W CLUTCH FORKS	EATON	ORIGINAL	PG
GDL 350.05	997078	2 RP 141 861 A	39
EXG 351		TLG-141865	39
EXG 352		TJG 141863	39
GDL 350.06	125743 125731	2RM 141 861	39
KTG 350.06.A			39
EXG 351		TJG 141 865	39
EXG 352		TJG 141 863	39
GDL 350.13		TPH 141857	40
GDL 350.14	125743 125731	2RM 141 861	40
KTG 350.14.A			40
EXG 351		TJG 141865	40
EXG 352		TJG 141 863	40
GDL 350.15		2 WO 311 551	40
GDL 350.21		2 T2 141 719 / E	40
KTG 350.21.A			40
GDL 350.22	125699	2T2 141720	40
KTG 350.22.A			40
GDL 350.30		2WOP0311549	40
KTG. 350.30.A			40

SETS FOR CLUTCH HOUSINGS	PG
KTA 5101	41
KTA 5102	41
KTA 5103	41

SETS FOR CLUTCH HOUSINGS	PG
KTA 5104	41
KTA 5105	41
KTA 5106	41

SETS FOR CLUTCH HOUSINGS	PG
KTA 5107	41
KTA 5112	41
KTA 5113	41

RCH 5010

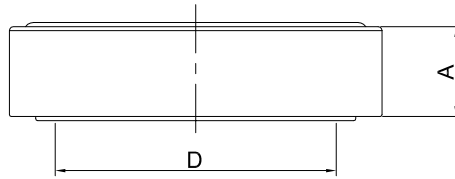


A - Altura / Height (mm) 93,0
 B - Largura para o garfo / Width Fork (mm) 71,0
 C - Diámetro para mola membrana / Diameter of spring membrane (mm) 70,0
 D - Diámetro Furo / Hole diameter (mm) 57,5

RDL 1429
 EATON 1271010

AGRALE MA 12.0, MA 15.0 MWM EURO 5 ALL
 BUS NEOBUS MID BUS
 INTERNATIONAL TRUCK 4.400 I DURASTAR
 4/2 6/2
 EURO 3 (ALL)
 PULL CLUTCH 365 mm
 APLICACION KTA 5105

RCS 5019

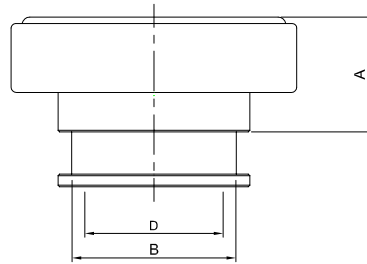


A - Altura / Height (mm) 22,0
 D - Diámetro Furo / Hole diameter (mm) 55,0

NWO RDS 1009
 6003.033.035.001

TRUCK 1600 RS, RD DIESEL , 1800 RS,
 RD (93-94), 7000

RCL 5035

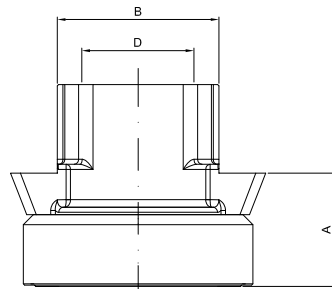


A - Altura / Height (mm) 36,70
 B - Largura para o garfo / Width Fork (mm) 52,80
 D - Diámetro Furo / Hole diameter (mm) 44,60

SACHS 3367
 NWO RDC 1035
 EATON 125802
 6003.033.035.001

PLATEAU 280 mm PULL CLUTCH
 TRUCK 1600D, 1800D, 4500D, 5000D, 7000D
 MWM 229.3, 229.4 MWM 4, MWM 4.1 13"

RCH 5040

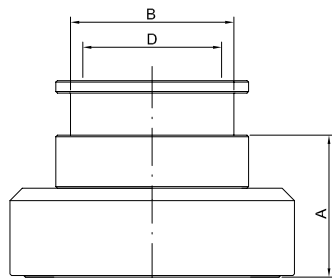


A - Altura / Height (mm) 45,0
 B - Largura para o garfo / Width Fork (mm) 64,80
 D - Diámetro Furo / Hole diameter (mm) 44,80

SACHS 3040
 EATON 125919
 2PO141165
 AGRALE MA 87, VOLARE W.8
 TRUCK 6.500, 8.700, EURO 5 2012...

PULL CLUTCH 330 mm

RCH 5303

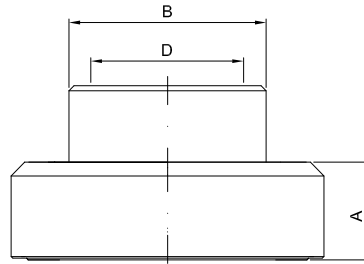


A - Altura / Height (mm) 45,50
 B - Largura para o garfo / Width Fork (mm) 52,80
 D - Diámetro Furo / Hole diameter (mm) 44,60

NWO RDL1303
 6013.033.035.001

HYDRAULIC CLUTCH 280 MM PULL
 TRUCK 7000, 7500, 8500, 1600D, 1800D, 4500D,
 5000D
 PLATEAU SACHS 280 / 300 / 325 mm

RCH 5347

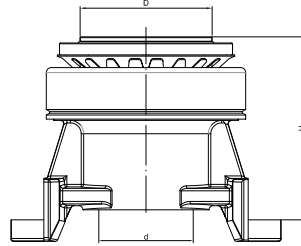


A - Altura / Height (mm) 28,7
 B - Largura para o garfo / Width Fork (mm) 57,9
 D - Diámetro Furo / Hole diameter (mm) 44,80

SACHS 3347
NWO RDL 1428
EATON 125783
6013.0033.005
6020.0030.16005

PLATEAU 325 mm
 TRUCK 7500 / 8500 / 9500 E-TRONIC, MICRO BUS CHASSI
 7.5 EMEC, E-TRONIC MA 8.5, 9.5 E-TRONIC VOLARE W8,
 W9 ELETRONIC TO ROLED FORK

RCH 5360 AC

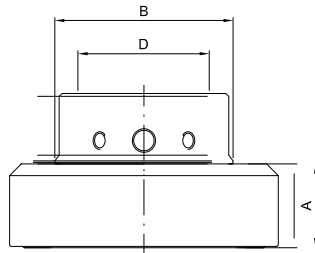


d - Diámetro Furo / Hole diameter (mm) 57,50
 D - Ø encaixe membrana / Ø diaphragm fitting (mm) 80,00
 H - Altura / Height (mm) 112,00

SACHS 3359
NWO RDL 1360AC

PLATEAU 380 mm GEARSHIFT AUTO CENTER,
 PULL CLUTCH
 TRUCK CHASSIS MT 12.0 LE E-TRONIC CUMMINS, CHASSIS
 MT 12.0 SB E-TRONIC CUMMINS INTERACT 4170 CV AFTER
 2004 CHASSI MA 12.0 E-TRONIC CUMMINS, INTERACT 6 185 E
 220 CV OVER 2004
 CHASSIS NA 15-0, EURO II UP 2012
 APPLICATION SET KTA 5101

RCH 5365

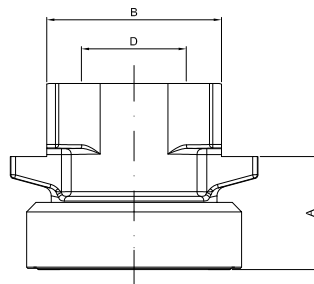


A - Altura / Height (mm) 28,70
 B - Largura para o garfo / Width Fork (mm) 62,0
 D - Diámetro Furo / Hole diameter (mm) 44,60

SACHS 3722 / 3389
NWO RDL 1365
EATON 125790
6007.0030.48005 / 6013.003.033.005

MARCOPOLO VOLARE MICRO BUS A5, A8, FURGOVAN
 6000 RSE, A 8000
 TRUCK SERIE 6000, 6000D, 7000, 7500, 8000 MWM TCA,
 8500, 9200 MWM TCAE
 MECHANIC MOTOR ELECTRICAL HOUSING COMPLETE
 CLUTCH 300/330 mm EMPUJAR
 MWM T2229 EC4T
 MWM T4.10 TURBO MWM 4.10 TCA
 CHASSI MA 8.5, 9.2 E TRONIC
 MWM ACTEON 4.12 TCAE 150 (CV) SPRINT

RCH 5399

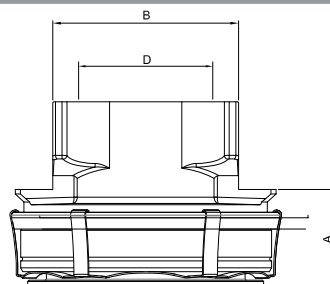


A - Altura / Height (mm) 48,0
 B - Largura para o garfo / Width Fork (mm) 74,80
 D - Diámetro Furo / Hole diameter (mm) 44,80

SACHS 3399
RDL 1431
6025003025005

AGRALE 330mm

RCH 5400 AC

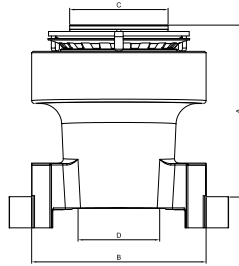


A - Altura / Height (mm) 40,0
 B - Largura para o garfo / Width Fork (mm) 74,80
 D - Diámetro Furo / Hole diameter (mm) 44,90

SACHS 3400
EATON 125910

AGRALE (362 mm) MA 9.2 , MA 10.0, VOLARE W8,
 W.9, WL 2012>...
 TRUCK 10.000 (MOTOR MWM MAXXIFORCE
 4.8 (165 CV), VOLARE W8 W9
 APPLICATION PLATEAU 1852 SACHS 362 mm
 PUSH

RCH 5563



A - Altura / Height (mm) 121,0
 B - Largura para o garfo / Width Fork (mm) 123,80
 C - Diâmetro para mola membrana / Diameter of spring membrane (mm) 70,0
 D - Diâmetro Furo / Hole diameter (mm) 57,5

EATON 125563 / 125715

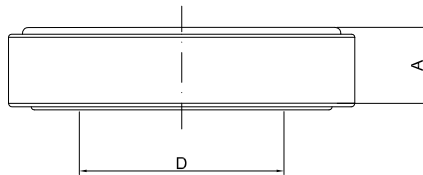
PLATEAU 365 mm PULL CLUTCH
 BUS MA/MT 12 HASTA 2005, BUS MA 15 UNTILL 2006,
 BUS 12.0 E-TRONIC INTERACT 4 170 CV, BUS MA 12
 SB E-TRONIC INTERACT 4 170 CV 2006...,
 MA 15.0 MWM 4.12 TCE 180 CV 2007 ...
APPLICATION SET KTA 5105

CBT

TECHNICAL DRAWING

REFERENCE/APLICACION

RCS 5015



A - Altura / Height (mm) 25,0
 D - Diâmetro Furo / Hole diameter (mm) 69,85

NWO RDS 1015
090.0602.021

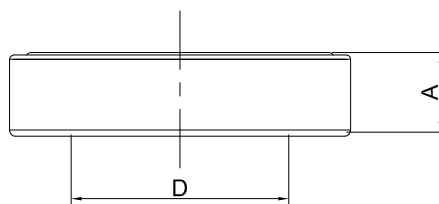
CBT ALL MODELS

CHRYSLER

TECHNICAL DRAWING

REFERENCE/APLICACION

RCS 5009

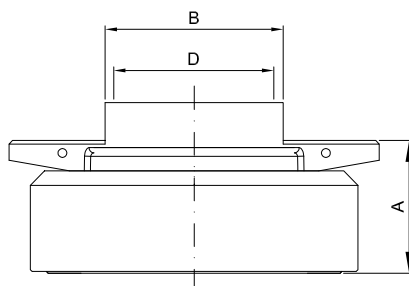


D - Diâmetro Furo / Hole diameter (mm) 52,40
 A - Altura / Height (mm) 20,0

SACHS 3367
NWO RDS 1009
AL 2116 T
FAG 526468

DODGE DART, CHARGER RT, GRAN SEGAM , MAGNUN

RCH 5323

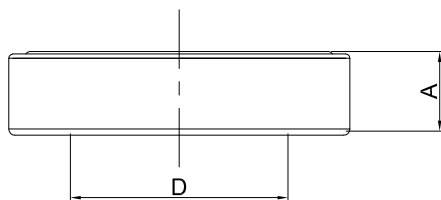


A - Altura / Height (mm) 36,50
 B - Largura para o garfo / Width Fork (mm) 49,80
 D - Diâmetro Furo / Hole diameter (mm) 44,50

SACHS 3323
NWO RDL 1323
EATON 125800

**DODGE 700, 900, 950 E, 17110 S, 10/ 87 Á 02/ 94, 8100, 8200,
 11130, 13150 ALL
 PUSH CLUTCH**

RCS 5009

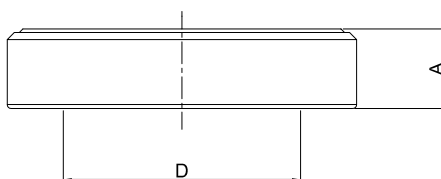


D - Diámetro Furo / Hole diameter (mm) 52,40
A - Altura / Height (mm) 20,0

SACHS 3367
NWO RDS 1009
BC 4N 7580 A
02987123
FAG 526468

GALAXIE 500 LTD, LANDAU, F 400, F 600, F 1000, F 4000, F 250,
F 350, SERIE P 4 00 68, P 350, P 400
F 100 / 150

RCS 5016

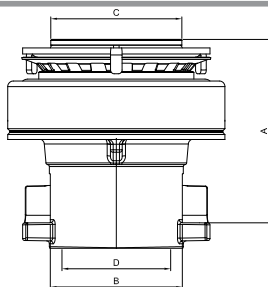


D - Diámetro Furo / Hole diameter (mm) 63,50
A - Altura / Height (mm) 22,0

NWO RDS 1016
3.585.341
INA F 45 984-2
FAG 576040

F 4600, 6600

RCH 5010

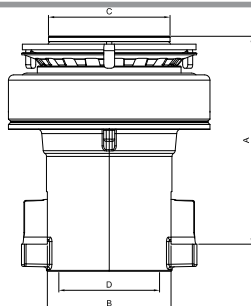


A - Altura / Height (mm) 93,0
B - Largura para o garfo / Width Fork (mm) 71,0
C - Diámetro para mola membrana / Diameter of spring membrane (mm) 70,0
D - Diámetro Furo / Hole diameter (mm) 57,5

EATON 127.1010
BH6X 7548 BA

NEW FORD CARGO 1723 KOLEKTOR, CUMMINS
1729 TRACTOR, 2428 2429
MOTOR CUMMIS 5.91 275-CV ALL ...2012
PLATEAU EATON 395MM PULL CLUTCH
REFERENCE EATON 138 215-1 APLICACION
CLUTCH
SACHS 395 mm
APPLICATION SET KTA 5105

RCH 5029

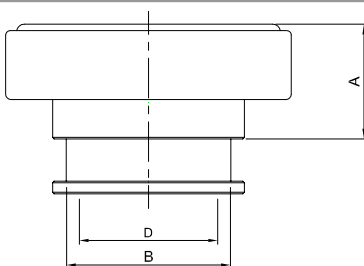


A - Altura / Height (mm) 122,0
B - Largura para o garfo / Width Fork (mm) 71,0
C - Diámetro para mola membrana / Diameter of spring membrane (mm) 70,0
D - Diámetro Furo / Hole diameter (mm) 57,5

EATON 127.1029 / 125.1040
F 81A7548 AC

NEW FORD CARGO 1317E, 1319E, 1517, 1519, 1717E,
1719
MOTOR CUMMIS 3.91 (170 CV) CUMMINS
TRUCK 2011 1722 E 2422 TODOS 1723, 2423 2012...
MOTOR CUMMIS 5.91 220-CV 2011...
PLATEAU 365MM LUK PULL CLUTCH
REFERENCE EATON 138.206.2 PLATEAU DISC.
SACHS 365 mm
APPLICATION SET KTA 5105

RCL 5035

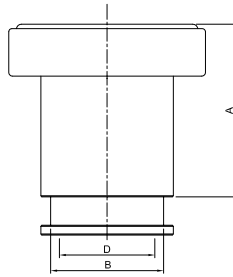


A - Altura / Height (mm) 36,70
B - Largura para o garfo / Width Fork (mm) 52,80
D - Diámetro Furo / Hole diameter (mm) 44,60

SACHS 3367
NWO RDC 1035
EATON 125802
82 TU 7548 A

PLATEAU 280 / 300 / 325 / 330 mm
PUSH CLUTCH
F 1000, F 2000, F 4000 ATÉ 79 - F 11000, F 13000, F 14000,
F 16000, F 19000, F 21000, F 22000 HASTA 86 MT MWM D229-6
13" FORD 4.4 MWM 229.4 FORD 272
F 600, F 700 MAXION PERKINS MWM, F 7000, FT 7000, F350,
F 400, F 4000 ...003-92
CARGO 1113, 1313, 712E, 2007 A 2012

RCL 5037

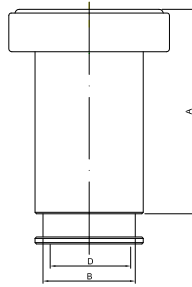


A - Altura / Height (mm) 80,0
B - Largura para o garfo / Width Fork (mm) 52,80
D - Diâmetro Furo / Hole diameter (mm) 44,60

SACHS 3373
NWO RDC 1037
2SK 141.165
XC45 7548 AA

PLATEAU 300 / 325 / 330 mm PUSH CLUTCH
F 4000 TURBO DIESEL MWM CUMMINS 09/97 A 1998
CARGO 814, 815 CUMMINS 13" 4BTAA 180CV MECANIC

RCL 5038

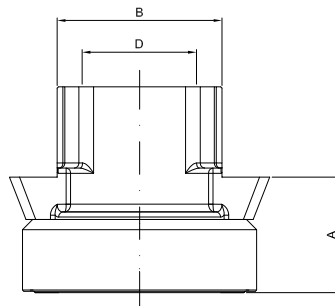


A - Altura / Height (mm) 115,60
B - Largura para o garfo / Width Fork (mm) 52,80
D - Diâmetro Furo / Hole diameter mm 44 60

SACHS 3387
NWO RDC 1038
EATON 125801
2SL 141.165

PLATEAU 325 / 330 mm PUSH CLUTCH
F 12000, F 14000, 1600 HD MOTOR MWM 6.10
F 14000 HD

RCH 5040

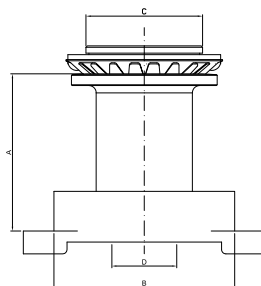


A - Altura / Height (mm) 45,0
B - Largura para o garfo / Width Fork (mm) 64,80
D - Diâmetro Furo / Hole diameter (mm) 44,80

SACHS 3040
EATON 125919
V.W. 2ZO-141165
2P0 - 141165
457548 AA

FORD 816-E, 1119 4.5 (2012 / 2013) FORD CARGO 816-E,
1119
CUMMINS ISB 4.5 160 P70 EURO 5
TRANSMISSION EATON FS-4505-D
PLATEAU APPLICATION 1085 SACHS
PLATEAU 330 mm PUSH CLUTCH

RCH 5348 SM

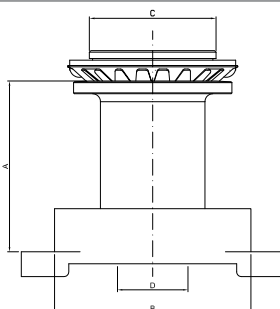


A - Altura / Height (mm) 100,0
B - Largura para o garfo / Width Fork (mm) 124,0
C - Diâmetro para mola membrana / Diameter of spring membrane (mm) 80,0
D - Diâmetro Furo / Hole diameter (mm) 44,50

SACHS 3358
NWO RDL 1348
6TH 6580
2Z 0141707-A

PLATEAU 350 / 380 mm - GEARSHIFT
PULL CLUTCH
CARGO C1117, 1215, 1218, C1317, 1415, 1417, 1418, 1419,
C1517, 1519, 1615, 1617, 1618, 1619, C2217, 2218, 2319
BUS B1618
APPLICATION SET KTA 5101

RCH 5349 SM

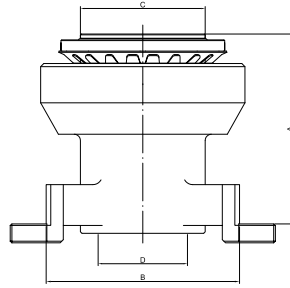


A - Altura / Height (mm) 107,0
B - Largura para o garfo / Width Fork (mm) 124,0
C - Diâmetro para mola membrana / Diameter of spring membrane (mm) 80,0
D - Diâmetro Furo / Hole diameter (mm) 44,50

SACHS 3346
NWO RDL 1349
E 3HN 7580 AA

CARGO C11-17 C 13-17, C 15-17, C 16-18, C 22-17 ASPIRATED
APPLICATION GEARSHIFT PLATEAU 350 mm
PULL CLUTCH
APPLICATION SET KTA 5101

RCH 5350

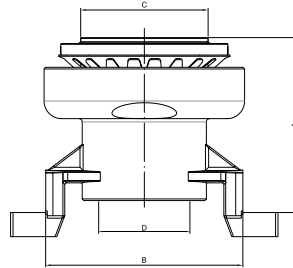


A - Altura / Height (mm) 119,30
 B - Largura para o garfo / Width Fork (mm) 124,0
 C - Diâmetro para mola membrana / Diameter of spring membrane (mm) 80,0
 D - Diâmetro Furo / Hole diameter (mm) 57,50

NWO RDL 1350
2RP 141.037C
BG 1X 7561-AA
BF 7X 7A 605A
LUK 500083910

PLATEAU LUK 365 mm PULL CLUTCH
 15170, 15180, 16170, 16180, 16200, 16210, 17210, 22170, 24220
BUS 16210, CARGO 1117 TURBO, CARGO 1317 TURBO, CARGO 1517 TURBO, CARGO 2217 TURBO
 1317, 1517, 12170, 12180, 13170, 13180, 14150, 14170, 14180, 14200, 14220
APPLICATION SET KTA 5101

RCH 5360 SM

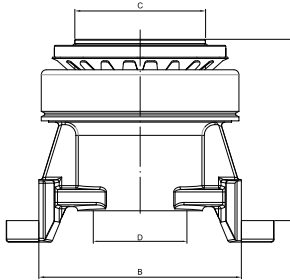


A - Altura / Height (mm) 112,0
 B - Largura para o garfo / Width Fork (mm) 124,0
 C - Diâmetro para mola membrana / Diameter of spring membrane (mm) 80,0
 D - Diâmetro Furo / Hole diameter (mm) 57,50

SACHS 3348
NWO RDL 1360 SM
EATON 125562
2ZO 141.707 A
BF6X 7A605 A

PLATEAU 350 / 380 mm PULL CLUTCH
TRUCK AND BUS OVER 170 CV
GEARSHIFT EXCEPT LINEA CONSTELLATION 1117
 1422, 1517, 1519, 1521, 1615, 1617, 1618, 1619, 1215,1218, 1317, 1415, 1417, 1418,1419, 1421, 1621, 1622,1630, 1721, 1722, 1730, 1731, 2217, 2218, 2219, 2319, 2322,2324, 2421, 2422, 2524, 2622, 2626, 2630, 2631, 3222, 3224, 3530, 4030, 4031, 4331 MAXTRON F 12000, F 14000, F 16000, BUS B 1618, B 1621
APPLICATION SET KTA 5101

RCH 5360 AC

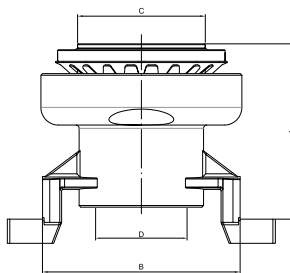


A - Altura / Height (mm) 112,0
 B - Largura para o garfo / Width Fork (mm) 124,0
 C - Diâmetro para mola membrana / Diameter of spring membrane (mm) 80,0
 D - Diâmetro Furo / Hole diameter (mm) 44,50

SACHS 3359
NWO RDL 1360 AC
2RP 141.037 B
BF7X 7A605 A

PLATEAU 350 / 380 / 395 mm AUTO CENTER PULL CLUTCH
TRUCK AND BUS OVER 170 CV GEARSHIFT
CON MORINGA 1215, 1317, 1415, 1421, 1422, 1517, 1519, 1521, 1615, 1618, 1621, 1622, 1630, 1717 CAIXA EATON, 1721, 1722, 1730,1731, 2217, 2218, 2219, 2319, 2322, 2324, 2421, 2422, 2425, 2428, 2622, 2626, 2628 E, 2630, 2631,2632 E, 3222, 3224,3530, 4030, 4031, 4432 E, 4532 E, 5032 E, ÔNIBUS, 1618, 1621, 2631/4031 UNTIL 2005
PLATEAU SACHS, LUK
APPLICATION SET KTA 5101

RCH 5360

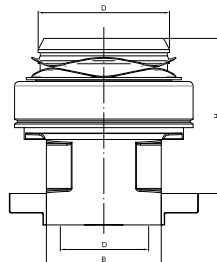


A - Altura / Height (mm) 112,0
 B - Largura para o garfo / Width Fork (mm) 124,0
 C - Diâmetro para mola membrana / Diameter of spring membrane (mm) 80,0
 D - Diâmetro Furo / Hole diameter (mm) 57,50

SACHS 3359
NWO RDL 1360
2RP 141.037B
BF6X 7A605 A

PLATEAU 350 / 380 / 395 mm PULL CLUTCH
TRUCK AND BUS OVER DE 170 CV GEARSHIFT
 1215, 1317, 1415, 1421, 1422, 1517, 1519, 1521, 1615, 1618, 1621, 1622, 1630, 1717 EATON, 1721, 1722, 1730,1731, 2217, 2218, 2219, 2319, 2322, 2324, 2421, 2422, 2425, 2428, 2622, 2626, 2628 E, 2630, 2631, 2632 E, 3222, 3224, 3530, 4030, 4031, 4432 E, 4532 E, 5032 E, BUS 1618, 1621, 2631/4031 UNTIL 2005 **PLATEAU SACHS, LUK**
APPLICATION SET KIT KTA 5101

RCH 5431 AC

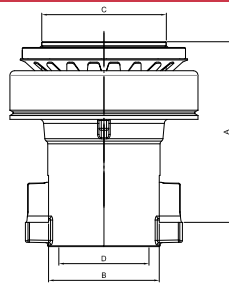


A - Altura / Height (mm) 104,50
 B - Largura para o garfo / Width Fork (mm) 77,80
 C - Diâmetro para mola membrana / Diameter of spring membrane (mm) 90,0
 D - Diâmetro Furo / Hole diameter (mm) 63,50

SACHS 3100, 3431
EATON 125755 / 1251050
FORD - AC 457548-AB
457548 AC
RTLO 14918 B

NEW FORD CARGO 1932 ,1932 R, 1933, 3132, 3133
MOTOR CUMMINS ISC 315 P5 ISL 8.9330 ICS 8.3 8.31 (320 CV) TODOS 3133 ...2012 CX FTS 16108 LL / FTS 16112 LL
PLATEAU 430 mm FAST COUPLING PULL CLUTCH
APPLICATION SET KTA 5106

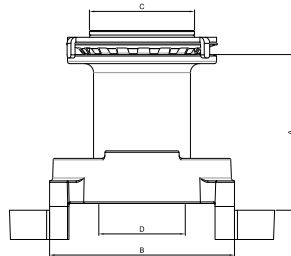
RCH 5529 AC



A - Altura / Height (mm) 112,0
B - Largura para o garfo / Width Fork (mm) 71,0
C - Diâmetro para mola membrana / Diameter of spring membrane (mm) 70,0
D - Diâmetro Furo / Hole diameter (mm) 57,5

FORD CARGO 1317 (GARBAGE TRUCK)
SACHS 380 mm

RCH 5562 SM

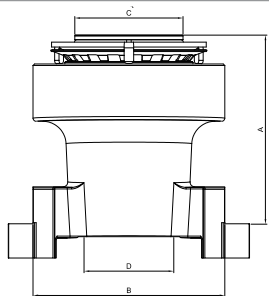


A - Altura / Height (mm) 103,50
B - Largura para o garfo / Width Fork (mm) 123,80
C - Diâmetro para mola membrana / Diameter of spring membrane (mm) 70,0
D - Diâmetro Furo / Hole diameter (mm) 44,5

EATON 125562

PLATEAU EATON 365mm GEARSHIFT PULL CLUTCH
CARGO 1117, 1215, 1218, 1317, 1415, 1417, 1418, 1419, 1421, 1422, 1517, 1519, 1521, 1522, 1615, 1617, 1618, 1619, 1717, 1721, 1722, 1730, 1731, 2217, 2218, 2219, 2319, 2322, 2324, 2421, 2422, 3222, F 12000 E F 14000, F 16000 UNTIL JULY 1999, BUS 1618, 1621
APPLICATION SET KTA 5105

RCH 5563

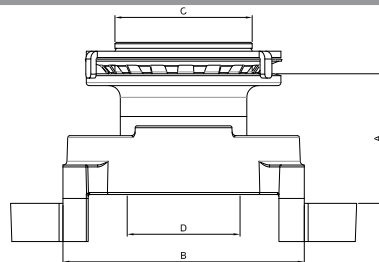


A - Altura / Height (mm) 121,0
B - Largura para o garfo / Width Fork (mm) 123,80
C - Diâmetro para mola membrana / Diameter of spring membrane (mm) 70,0
D - Diâmetro Furo / Hole diameter (mm) 57,5

EATON 125563

PLATEAU EATON 365mm GEARSHIFT PULL CLUTCH
CARGO 1117, 1215, 1218, 1317, 1415, 1417, 1418, 1419, 1421, 1422, 1517, 1519, 1521, 1522, 1615, 1617, 1618, 1619, 1717, 1721, 1722, 1730, 1731, 2217, 2218, 2219, 2319, 2322, 2324, 2421, 2422, 3222, F 12000 E F 14000, F 16000 UNTIL JULY 1999, BUS 1618, 1621
APPLICATION SET KTA 5105

RCH 5650 SM

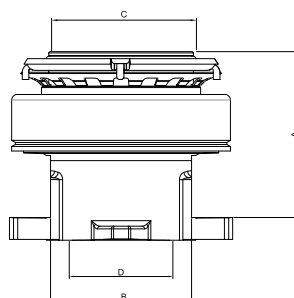


A - Altura / Height (mm) 66,0
B - Largura para o garfo / Width Fork (mm) 123,80
C - Diâmetro para mola membrana / Diameter of spring membrane (mm) 70,0
D - Diâmetro Furo / Hole diameter (mm) 44,5

EATON 125650

PLATEAU EATON 365 mm GEARSHIFT PULL CLUTCH DOUBLE CLUTCH (BI DISC)
CARGO 1630, 1730, 1731, 1831, 2324, 2422 6X4, 2425, 2622, 2630, 2631, 2831, 3224, 3530, 4030, 4031, 4331, 5031, 4331 S MAXTRON 5031
APPLICATION SET KTA 5105

RCH 5713

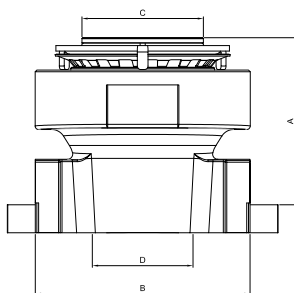


A - Altura / Height (mm) 90,0
B - Largura para o garfo / Width Fork (mm) 78,0
C - Diâmetro para mola membrana / Diameter of spring membrane (mm) 80,0
D - Diâmetro Furo / Hole diameter (mm) 57,5

EATON 125713

NEW CABIN, NEW FORD CARGO 2429, 2622E, 2223E, 2628, 2629
APPLICATION CLUTCH EATON 130 215-1
PLATEAU 395 mm PULL CLUTCH
APPLICATION SET KTA 5101

RCH 5716



A - Altura / Height (mm) 95,50
 B - Largura para o garfo / Width Fork (mm) 123,80
 C - Diâmetro para mola membrana / Diameter of spring membrane (mm) 70,0
 D - Diâmetro Furo / Hole diameter (mm) 57,5

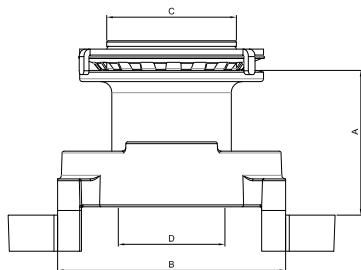
EATON 125716

PLATEAU EATON 395 mm GEARSHIFT PULL CLUTCH

CARGO 1630, 1730, 1731, 2324, 2422 6X4, 2425, 2622, 2626, 2630,
 2631, 2632, 2831, 2932, 3224, 3530, 4030, 4031, 4331, 4432.4, 5031,
 5032, 6332(6X2, 6X4)

APPLICATION SET KTA 5105

RCH 5717 SM



A - Altura / Height (mm) 78,0
 B - Largura para o garfo / Width Fork (mm) 123,80
 C - Diâmetro para mola membrana / Diameter of spring membrane (mm) 70,0
 D - Diâmetro Furo / Hole diameter (mm) 44,5

EATON 125717

PLATEAU EATON 395 mm GEARSHIFT PULL CLUTCH

CARGO 1630, 1730, 1731, 1831, 2324, 2422 6X4, 2425, 2622, 2630,
 2631, 2831, 3224, 3530, 4030, 4031, 4331, 5031, 4331 S MAXTRON

APPLICATION SET KTA 5105

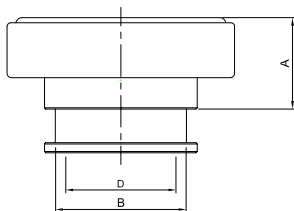
GM - GENERAL MOTORS

HOUSINGS

TECHNICAL DRAWING

REFERENCE/APPLICATION

RCL 5035

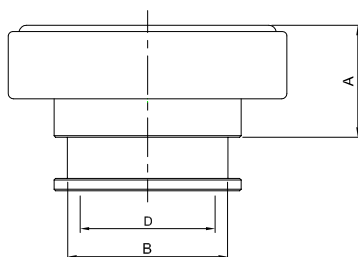


A - Altura / Height (mm) 36,70
 B - Largura para o garfo / Width Fork (mm) 52,80
 D - Diâmetro Furo / Hole diameter (mm) 44,60

SACHS 3367
 NWO RDC 1035
 EATON 125802
 94.609.464

PLATEAU SACHS 325 / 330 mm PULL CLUTCH
 GM 11000, 12000, 13000, 14000, 15000, 21000,
 22000 MAXION (Q20 B 6)

RCL 5036

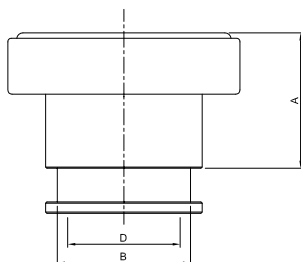


A - Altura / Height (mm) 34,60
 B - Largura para o garfo / Width Fork (mm) 52,80
 D - Diâmetro Furo / Hole diameter (mm) 44,60

NWO RDC 1036
 94.609.464

D 60 CON MOTOR PERKINS 6357/6358
 CLUTCH 300/305 mm
 APPLICATION PLATEAU SACHS 1286

RCL 5061



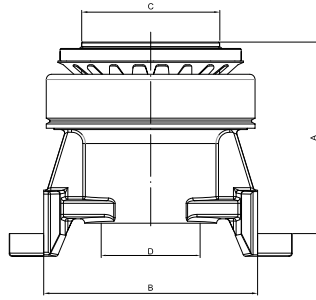
A - Altura / Height (mm) 53,0
 B - Largura para o garfo / Width Fork (mm) 52,80
 D - Diâmetro Furo / Hole diameter (mm) 44,60

NWO RDL 1061
 93 D 2934

D 60 CON MOTOR DETROIT OVER 09/80
 CLUCHT 300/305 mm PULL

HOUSINGS

RCH 5360 AC

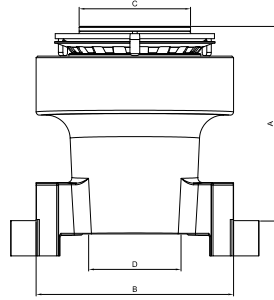


A - Altura / Height (mm) 112,0
 B - Largura para o garfo / Width Fork (mm) 124,0
 C - Diâmetro para mola membrana / Diameter of spring membrane (mm) 80,0
 D - Diâmetro Furo / Hole diameter (mm) 57,50

SACHS 3348 / 3359
NWO RDL 1360 AC

PLATEAU 380 mm PULL CLUTCH
GM 12179, 14190, 16220
AUTO CENTER, CARTERPILLAR 3116 CX FS5205A
6306A
(SERVO)
APPLICATION SET KTA 5101

RCH 5563



A - Altura / Height (mm) 121,0
 B - Largura para o garfo / Width Fork (mm) 123,80
 C - Diâmetro para mola membrana / Diameter of spring membrane (mm) 70,0
 D - Diâmetro Furo / Hole diameter (mm) 57,5

EATON 125563

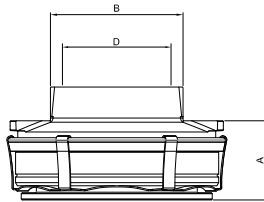
PLATEAU EATON 365 mm PULL CLUTCH
GM 12179, 14190, 16220
JULY 2000
APPLICATION SET KTA 5105

IVECO
HOUSINGS

TECHNICAL DRAWING

REFERENCE/APLICACION

RCH 5320 AC

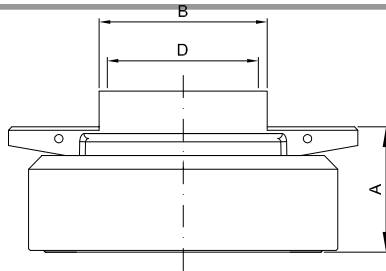


A - Altura / Height (mm) 40,0
 B - Largura para o garfo / Width Fork (mm) 65,80
 D - Diâmetro Furo / Hole diameter (mm) 54,60

SACHS 3325
NWO RDL 1320
EATON 125807
7138964
8060.45 A
71444597

PLATEAU 350 mm PULL CLUTCH
EURO CARGO E 160, E 21, 1260

RCH 5323

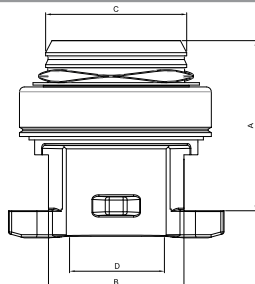


A - Altura / Height (mm) 36,50
 B - Largura para o garfo / Width Fork (mm) 49,80
 D - Diâmetro Furo / Hole diameter (mm) 44,50

SACHS 3323
NWO RDL 1323
EATON 125800
7145819
8060.25 R
T1314161

PLATEAU 325 / 330 mm PULL CLUTCH
EURO CARGO E 120, E 15

RCH 5336 AC

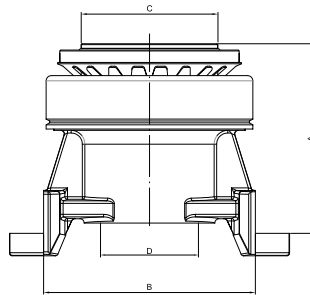


A - Altura / Height (mm) 104,60
 B - Largura para o garfo / Width Fork (mm) 85,50
 C - Diâmetro para mola membrana / Diameter of spring membrane (mm) 90,0
 D - Diâmetro Furo / Hole diameter (mm) 63,20

SACHS 3366
NWO RDL 1336
EATON 125652
190.0756, 190.4779, 190.4780, 190.4785, 190.4796,
190.5282, 421.02103, 504.120865, 504.385079, 500.317671,
504.091142

PLATEAU 430 mm FAST COUPLING PULL CLUTCH
IVECO EURO TECH 8210-42 KA 13.8 TURBO EURO TRAKKER
450 E32T, 450 E33T STRALIS 4X2 6X2 6X4
190, 240, 260 - EURO CARGO 150 E, 260 E, 320 E - EURO STAR 190 E,
140 C, 260 E, 400 E, 440 E, EURO TECH 180 E, 190 E, 240 E, 260 E,
325 E, 400 E, 440 E - EURO TRAKKER 190 E, 260 E, 330 E, 400 E,
720 E - BUS 380-29, 380-35, 380-28
APPLICATION SET KIT KTA 5106

RCH 5360 AC

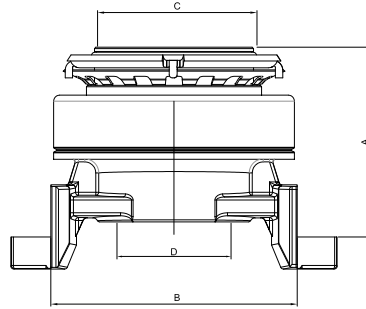


A - Altura / Height (mm) 112,0
B - Largura para o garfo / Width Fork (mm) 124,0
C - Diâmetro para mola membrana / Diameter of spring membrane (mm) 80,0
D - Diâmetro Furo / Hole diameter (mm) 57,50

SACHS 3359
NWO RDL 1360 AC
5801302211
503101330

PLATEAU AUTO CENTER 350 mm
PULL CLUTCH
TRUCK EURO CARGO TECTOR 170 E 21 MWM
6.10 TCA GERARSHIFT
APPLICATION SET KTA 5101

RCH 5391 AC

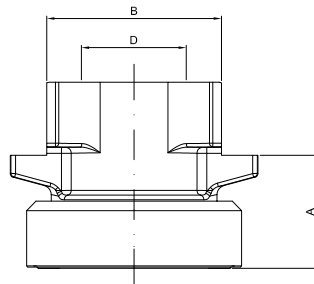


A - Altura / Height (mm) 94,0
B - Largura para o garfo / Width Fork (mm) 124,0
C - Diâmetro para mola membrana / Diameter of spring membrane (mm) 80,0
D - Diâmetro Furo / Hole diameter (mm) 57,50

SACHS 3391
IVECO 50310133

PLATEAU 350 / 380 mm PULL CLUTCH
EURO CARGO TECTOR 170 E 22, 230 E 22, 230 E 24, 241
BUS CC 170 E 22 OVER 2004
CARGO TECTOR SCUDATO CC 170 E 23, 230 E24
APPLICATION SET KTA 5101

RCH 5399

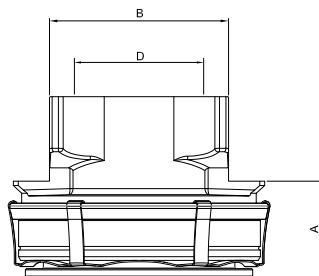


A - Altura / Height (mm) 48,0
B - Largura para o garfo / Width Fork (mm) 74,80
D - Diâmetro Furo / Hole diameter (mm) 44,80

SACHS 3399
RDL 1431
5949890189

IVECO (330 mm) PULL CLUTCH
VERTIS 90 V 16, 90 V 18,
EURO 3 EURO 5 NEF-4 ALL 9 TON
TRANSMISSION ZF 5-S-420 HD

RCH 5400 AC

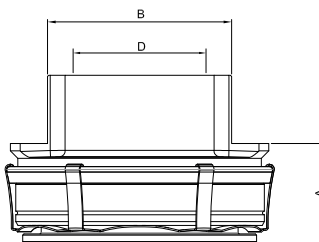


A - Altura / Height (mm) 40,0
B - Largura para o garfo / Width Fork (mm) 74,80
D - Diâmetro Furo / Hole diameter (mm) 44,90

SACHS 3400
EATON 125910
IVECO 5949890688

TRUCK IVECO (362 mm) VERTIS 130 V 18, NFF4
130 V 19, EURO 3/5
MOTOR FPT 4.19 ALL 13 TON
APPLICATION PLATEAU 1852 SACHS
PULL CLUTCH

RCH 5401



A - Altura / Height (mm) 40,0
B - Largura para o garfo / Width Fork (mm) 74,80
D - Diâmetro Furo / Hole diameter (mm) 57,50

SACHS 3401

TRUCK IVECO STRADALE 240 25S 6X2 TECTOR
NEF6
EURO 3/5, CX ZF 1100TD
PLATEAU 395 mm PULL CLUTCH

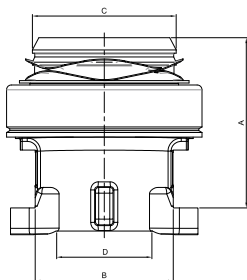
IVECO

HOUSINGS

TECHNICAL DRAWING

REFERENCE/APLICACION

RCH 5498 AC



A - Altura / Height (mm) 104,50
B - Largura para o garfo / Width Fork (mm) 85,50
C - Diâmetro para mola membrana / Diameter of spring membrane (mm) 90,0
D - Diâmetro Furo / Hole diameter (mm) 63,20

SACHS 3398

TRUCK IVECO STRALIS 360 CURSOR 9 (ALL)
STRALIS - 360, 380, 400, 410, 440, 460, 480 CURSOR
13 EURO 5 (ALL)
GEARSHIFT ZF 16 AS, 2630, 2631 AS TRONIC
PLATEAU 430 mm 1457 FAST COUPLING
PULL
MAN TGX 26440, 28440, 29440, 33440D ...2012
APPLICATION SET KTA 5106

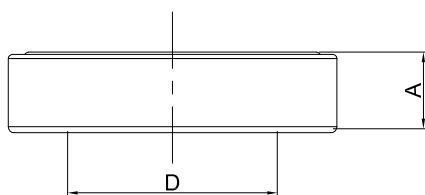
JOHN DEERE

BEARINGS

TECHNICAL DRAWING

REFERENCE/APLICACION

RCS 5009



A - Altura / Height (mm) 20,0
D - Diâmetro Furo / Hole diameter (mm) 52,40

SACHS 3367
NWO RDS 1009
AL 2216 T AM 1284 T

TRACTOR SERIE 4020 68 A 75

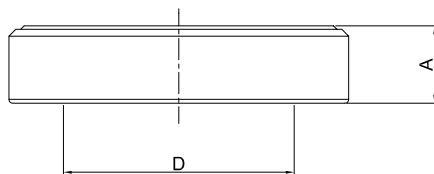
MASSEY

BEARINGS

TECHNICAL DRAWING

REFERENCE/APLICACION

RCS 5016



D - Diâmetro Furo / Hole diameter (mm) 63,50
A - Altura / Height (mm) 22,0

NWO RDS 1016
358.5341.M1
487.874-M2
FAG 576040

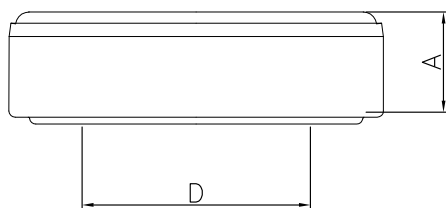
MF 55X, 65R, 85X, 95X, 220, 250, 265, 270, 275,
290, 292, 310, 385

MERCEDES BENZ HOUSINGS

DISEÑO TÉCNICO

REFERENCIA / APLICACION

RCS 5007

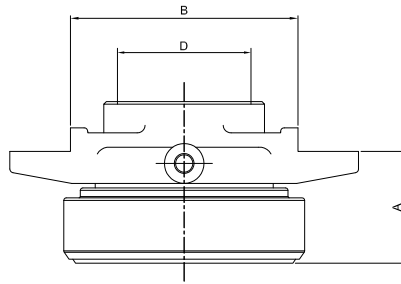


A - Altura / Height (mm) 21,80
D - Diâmetro Furo / Hole diameter (mm) 50,0

NWO RDS 1007
000.254.0020
000.252.0120
345.254.7020

12, 321, 1111, 1113, 1116, 1117, 1314, 1316, 1317, 1513, 1514, 1516, 1517, 1518,
1813, 1924, 2013, 2014, 2213, 2214, 2216, 2218, LP 312, LP 312 L, L 1111, L 1113,
L 1314, L 1513, L1514, L 2013, L 2014, L 2213, LPO / OF 1113, 1114, OF/OH 1113,
1114, O 321, O 352, O 362, O 364, O 365 MT - OM 352

RCH 5020

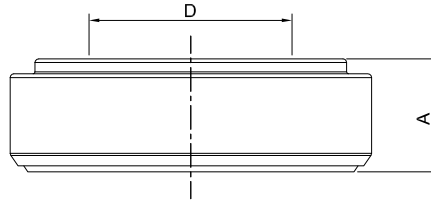


A - Altura / Height (mm) 44,8
B - Largura para o garfo / Width Fork (mm) 91,8
D - Diâmetro Furo / Hole diameter (mm) 54,0

SACHS 3384
NWO RDC 1020
320.250.0015
343.254.0010
345.981.7901

PLATEAU 380 mm PULL CLUTCH
1423, 1519, 1520, 1620, 1624, 1921, 1924, 2020, 2023,
2223, 2224, 2620 O-317, OM-355, OM-326, O-331,
O-355, O-364, 1418, 1619, 1920, 2219

RCS 5020

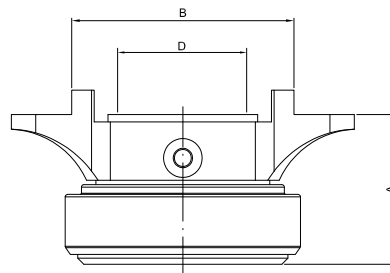


A - Altura / Height (mm) 25,0
D - Diâmetro Furo / Hole diameter (mm) 60,0

SACHS 3384 (BEARINGS)
NWO RDL 1020
320.250.0015
343.254.0010
345.981.7901

PLATEAU 380 mm PULL CLUTCH
1423, 1519, 1520, 1620, 1624, 1921, 1924, 2020, 2023,
2223, 2224, 2620 O-317, OM-355, OM-326, O-331,
O-355, O-364, 1418, 1619, 1920, 2219

RCH 5021

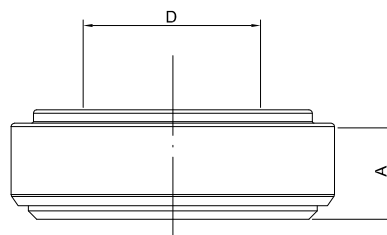


A - Altura / Height (mm) 64,0
B - Largura para o garfo / Width Fork (mm) 91,8
D - Diâmetro Furo / Hole diameter (mm) 48,0

SACHS 3385
NWO RDL 1021
304.250.0315
335.254.0010

PLATEAU 380 mm PULL CLUTCH
BUS O-326, 364, 355, OM 355/5, TODOS, 1518,
1618, 1623, 1918, 1920, 1923

RCS 5021

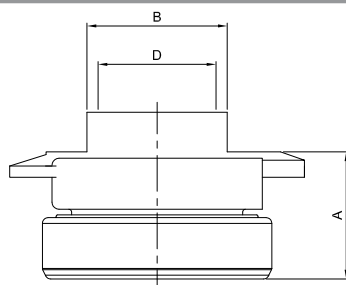


A - Altura / Height (mm) 29,50
D - Diâmetro Furo / Hole diameter (mm) 60,0

SACHS 3385 (RODAMIENTO)
NWO RDC 1021
304.250.0315
335.254.0010

PLATEAU 380 mm
BUS O-326, 364, 355, OM 355/5, ALL, 1518,
1618, 1623, 1918, 1920, 1923

RCH 5300

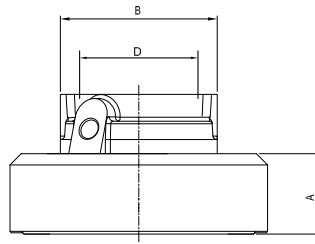


A - Altura / Height (mm) 45,0
B - Largura para o garfo / Width Fork (mm) 49,8
D - Diâmetro Furo / Hole diameter (mm) 42,10

SACHS 3358
NWO RDL 1300
321.250.0515
352.250.0515
340.250.0215
352.250.0115

PLATEAU 280 / 310 mm PULL CLUTCH
BUS AND TRUCK MB 1111, OM 321 (85 CV) OVER 1964,
MB 1113 OM-352 DESPUÉS 1987, MB 1114 OM-352 UP UNTIL 07/82
(130 CV), MB 608 OM-314 (85 CV) ALL, O-321 OM-321,
OM-352 (85 CV), (130 CV) HIGH SYSTEM
1114, 1116, 1117, 1313, 1314, 1316, 1317, 1513, 1514, 1516,
1517, 1518, 1813, 1816, 2013, 2014, 2213, 2214, 2216, 2217

RCH 5305

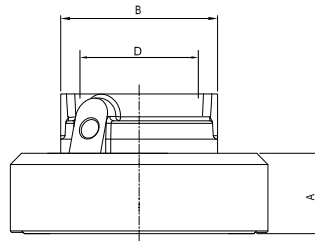


A - Altura / Height (mm) 31,50
B - Largura para o garfo / Width Fork (mm) 55,80
D - Diâmetro Furo / Hole diameter (mm) 42,20

SACHS 3324
NWO RDL 1305
002.250.4615, 000.250.4615, 001.250.9315, 381.250.0415

PLATEAU 330 mm PULL CLUTCH
MBB 1114, 1118, 1214, 1313, 1314, 1318, 1414, 1517, 1614, 1618, 1714, 1718 (133 CV TODOS)
1117, 1118, 1518 (168 CV AFTER 1/84), 1218, 1418, (UP UNTIL 1996), 2214, 2215, 2218, 2314, 2318, 2418
BUS OF 1113, OF 1115, OF 1315 (136 CV), OF 1318, OF 1618, O 365, O 370, OM 366 A, OH 1315 (136 CV)
OH 1114, OH 1118, OH 1128, OH 1214, OH 1618, OH 2418

RCH 5305 TB

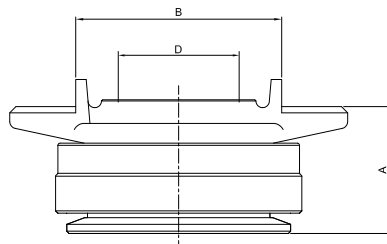


A - Altura / Height (mm) 31,50
B - Largura para o garfo / Width Fork (mm) 55,80
D - Diâmetro Furo / Hole diameter (mm) 42,20

SACHS 3324
NWO RDL 1305
000.250.4215, 000.250.4615, 000.250.9315, 381.250.0415

PLATEAU 330 mm PULL CLUTCH
MBB 1114, 1118, 1313, 1314, 1517, 1714, 1718 (133 CV ALL)
1117, 1118, 1518 (168 CV AFTER 1/84), 1218, 1418, (UP UNTIL 1996), 2214, 2215, 2218, 2314, 2318, 2418
BUS OF 1113, OF 1115, OF 1315 (136 CV), OF 1318, OF 1618, O 365, O 370, OM 366 A, OH 1315 (136 CV)
OH 1114, OH 1118, OH 1128, OH 1214, OH 1618, OH 2418

RCH 5306

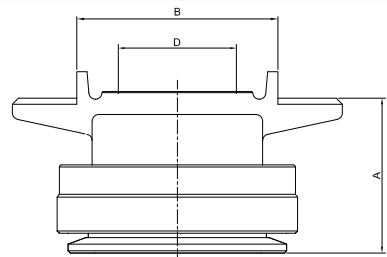


A - Altura / Height (mm) 56,0
B - Largura para o garfo / Width Fork (mm) 91,80
D - Diâmetro Furo / Hole diameter (mm) 54,20

SACHS 3330
NWO RDL 1306
001.250.0315

PLATEAU 380 mm PULL CLUTCH
O 370 C/ MT OM 355/5 (204 CV ALL) (238 CV),
O 370 R C/ MT OM 355/5 A (192 CV ALL), 0371, OH 1518
OH 1418, OH 1419, OH 1520
MAFERSA BUS M 210 CUMMINS
MBB 1518, 1524, 1525 OM-355/6 LS1924

RCH 5307

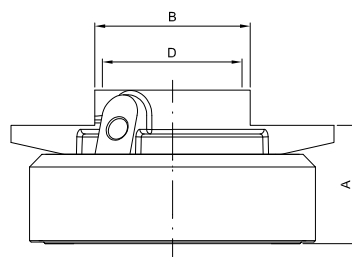


A - Altura / Height (mm) 71,0
B - Largura para o garfo / Width Fork (mm) 91,8
D - Diâmetro Furo / Hole diameter (mm) 54,20

SACHS 3327
NWO RDL 1307
000.250.1915
000.250.2515
000.250.7415
000.250.7715

PLATEAU 420 mm PULL CLUTCH
O 370, O 371 C/ MT A (285 CV ALL), 1924, 1924 A, 1929, 1930, 1625 L / LS
1525, 1625, 1630, LS 1932, 1933, 1934, L 2225, 2325
BUS OF 1625, OH 2325
OM 355/6A OM 449-A (252 CV) (285 CV)

RCH 5308

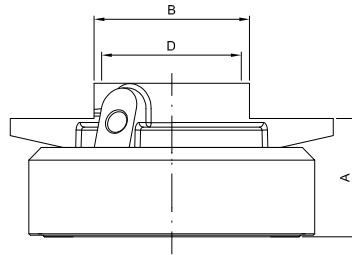


A - Altura / Height (mm) 37,80
B - Largura para o garfo / Width Fork (mm) 49,80
D - Diâmetro Furo / Hole diameter (mm) 42,20

SACHS 3310
NWO RDL 1308
000.250.1715
000.250.3115
000.250.3715
000.250.4015
308.250.7015 / 308.250.7215

PLATEAU 250 mm PULL CLUTCH
HIDRAULIC SYSTEM 608 D, 708 D, L 608, L 708 (85 CV)
MICRO BUS LO 608, LO 708 (1987 UP UNTIL 1989)
VAN 408 D, 408 GD, 508 D, 508 GD
811, 813, 911 B, 913, 1013, 1113, 1113 B, 1313, 1322, 1413, 1417, 1513, 1813, 2214, 2217, 2414

RCS 5308 TB

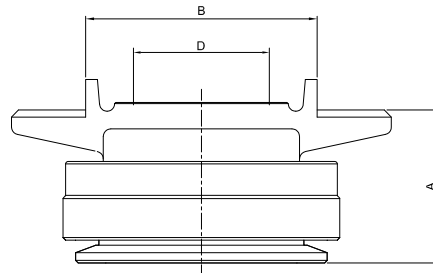


A - Altura / Height (mm) 37,80
B - Largura para o garfo / Width Fork (mm) 49,80
D - Diâmetro Furo / Hole diameter (mm) 42,20

SACHS 3310 (ENCANECADO)
NWO RDL 1308
000.250.1715
000.250.3115
000.250.3715
000.250.4015
308.250.7015 / 308.250.7215

PLATEAU 250 mm PUSH CLUTCH
HIDRAULIC SYSTEM 608 D, 708 D, L 608, L 708 (85 CV)
BUS LO 608, LO 708 (1987 UP UNTIL 1989)
VAN 408 D, 408 GD, 508 D, 508 GD
811, 813, 911 B, 913, 1013, 1113, 1113 B, 1313, 1322, 1413, 1417, 1513, 1813, 2214, 2217, 2414

RCH 5311

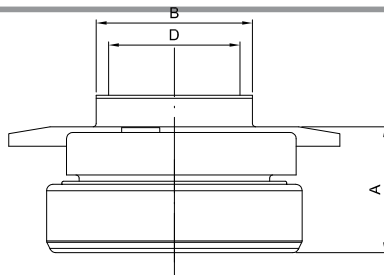


A - Altura / Height (mm) 62,2
B - Largura para o garfo / Width Fork (mm) 91,8
D - Diâmetro Furo / Hole diameter (mm) 54,20

SACHS 3329
NWO RDL 1311
000.250.7615

PLATEAU 420 mm PUSH CLUTCH
O 370 RSD, O 371 RSD, C/MT OM 355/6 LA, OM 326, LS 1932, 1933, 1934 (340 CV)

RCH 5312

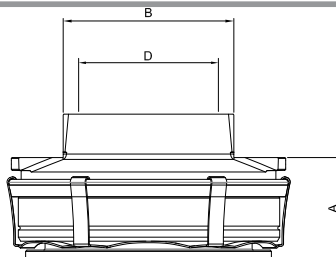


A - Altura / Height (mm) 41,0
B - Largura para o garfo / Width Fork (mm) 50,0
D - Diâmetro Furo / Hole diameter (mm) 42,10

NWO RDL 1312
340.250.0210, 352.250.0115, 352.250.0515, 321.250.1315,
345.250.0215

608, 709, 808, 809, 811, 813, 911 B, 913, 1013 B, 1113 OM 352
1316, 1317, 1318, 1516, 1518, 1813, 1816, 2013, 2014,
2216, 2217
PLATEAU LOW LEVER 310 mm PUSH
CLUTCH

RCH 5320 AC

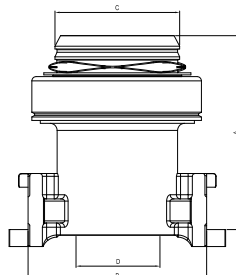


A - Altura / Height (mm) 40,0
B - Largura para o garfo / Width Fork (mm) 65,80
D - Diâmetro Furo / Hole diameter (mm) 54,60

SACHS 3325
NWO RDL 1320
EATON 125807
001.250.2215
000.250.7015

PLATEAU 350 / 362 / 380 / 395 mm PUSH CLUTCH
TRUCK AND BUS MB 1117, 1217, 1218, 1319, 1417,
1418, 1419, 1620, 1621, 1717, 1720, 1721, 1723-S, OF 1420,
OF 1721, OF 1722, L 1620, L 1622, L 1720, L 1718 M CAJA ZF
BUS OF/OH 1417, 1418 ELETRONIC (PLATEAU EATON)
TRUCK AND BUS OM 366 LA
O 371, OF/OH 1113, 1318, 1420, 1421, 1521, 1620, 1621, 1622, 1721
OM-924-LA ELETRONIC

RCH 5321 AC

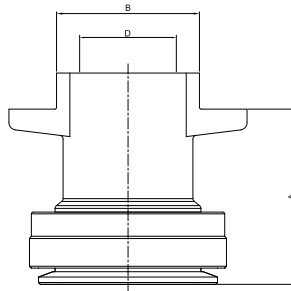


A - Altura / Height (mm) 137,0
B - Largura para o garfo / Width Fork (mm) 127,50
C - Diâmetro para mola membrana / Diameter of spring membrane (mm) 90,0
D - Diâmetro Furo / Hole diameter (mm) 60,80
E - Diâmetro Furo / Hole diameter (mm) 60,80

SACHS 3345 / 3346
NWO RDL 1321
EATON 125653
001.250.9215
002.250.3215

PLATEAU SACHS 430 mm FAST COUPLING PULL
CLUTCH
TRUCK AND BUS LS 1935 DEPUÉS 06/94, 1941 AFTER 07/94,
O 371 RS, RSD WITH MOTOR O 447 LA
LS 1634, 1735, 1935, 1938, 1940, 1941, 1945, 2435, 2629,
2635, 2637 (SIMPLE CLUTCH)
APPLICATION SET KTA 5106

RCH 5324 AC

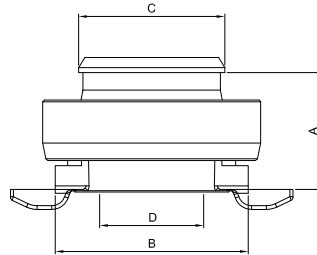


A - Altura / Height (mm) 97,0
B - Largura para o garfo / Width Fork (mm) 79,8
D - Diâmetro Furo / Hole diameter (mm) 54,50

SACHS 3383
NWO RDL 1324
001.250.0715

PLATEAU 420 mm PUSH CLUTCH
LS 1630, APÓS 08/93, MB 1630, 1632, OM 449
1518, 1520, 1524, 1525, 1625, LS 1924, 1929, 1930, 1932,
1933, 1934, L 2225, 2325
BUS O 370, O 371 RS

RCH 5326

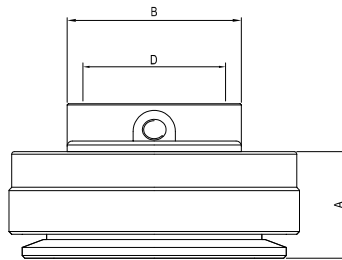


A - Altura / Height (mm) 48,0
B - Largura para o garfo / Width Fork (mm) 77,90
C - Diâmetro para mola membrana / Diameter of spring membrane (mm) 60,0
D - Diâmetro Furo / Hole diameter (mm) 42,40

SACHS 3326
NWO RDL 1326
000.250.9515
001.250.0815

PLATEAU 280 / 310 mm PULL CLUTCH
OM 364 LA (140 CV), 1014, 1214 AFTER 1987, 608, 709, 712,
809, 912, 914
LN 710, LO 610, LO 712, 715, 812, 814, 914
1214 BUS OM 364 LA, 710 (122 CV) AFTER 2001
608, 708, OM 314, (85 CV) MECHANIC ALL.

RCH 5328

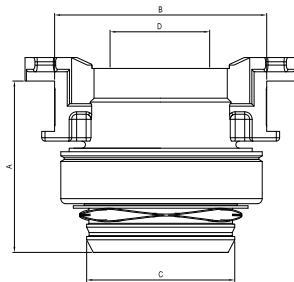


A - Altura / Height (mm) 40,0
B - Largura para o garfo / Width Fork (mm) 65,80
D - Diâmetro Furo / Hole diameter (mm) 54,20

NWO RDL 1328
000.250.7015

O 371 U 12/92, OF/OH 1113 A, OH 1219 OH 1117, OH 1318,
OH 1319, OH 1417, OH 1419, OH 1517, OH 1621 MOTOR
OM 366 A, OM 366 LA

RCH 5331



A - Altura / Height (mm) 101,0
B - Largura para o garfo / Width Fork (mm) 127,50
C - Diâmetro para mola membrana / Diameter of spring membrane (mm) 90,0
D - Diâmetro Furo / Hole diameter (mm) 54,50

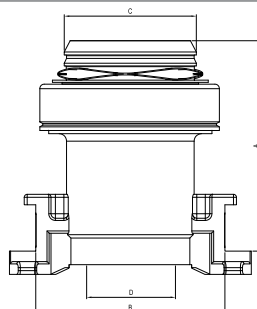
NWO RDL 1331
001.250.0915, 001.250.4715, 001.250.6215, 001.250.8415
001.250.9715, 001.250.8115, 001.250.6315

PLATEAU 430 mm FAST COUPLING PULL

O 303, 304, 404 - OH 1627, 1222,
1224, 1226, 1227, 1231, 1234, 1422, 1426, 1429, 1627, 1929, 1935,
1945, 2024, 2031, 2422, 2426, 2427, 2429, 2433, 2434, 2522, 2524,
2527, 2531, 2544, 2629, 2631, 2635, 2644, 2648, 2650, 3229, 3529,
3535, 3538, 3548, 3550, 4635, 4644, 4645, 4648, 4850, 5035

APPLICATION SET KTA 5106

RCH 5332 AC



A - Altura / Height (mm) 137,0
B - Largura para o garfo / Width Fork (mm) 127,50
C - Diâmetro para mola membrana / Diameter of spring membrane (mm) 90,0
D - Diâmetro Furo / Hole diameter (mm) 60,80

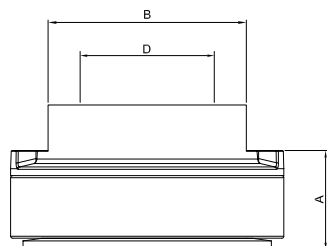
NWO RDL 1332
EATON 125653
001.250.0515, 001.250.4815, 001.250.6415, 001.250.8615
001.250.9815, 001.250.7915, 001.250.6515

PLATEAU 430 mm FAST COUPLING PULL

BUS O 400, O 500, OM 457 LA, OH 1628, 1635, 1636
O 350 - OH 1634, 1227, 1234, 1424, 1719, 1733, 1735, 1824, 1827,
1831, 1834, 1838, 1844, 1850, 1853, 1929, 1935, 1948, 2024, 2429,
2435, 2448, 2524, 2527, 2529, 2531, 2534, 2535, 2538

APPLICATION SET KTA 5106

RCH 5337

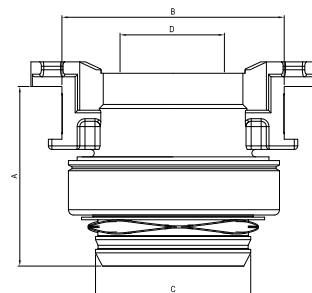


A - Altura / Height (mm) 40,0
B - Largura para o garfo / Width Fork (mm) 79,8
D - Diâmetro Furo / Hole diameter (mm) 60,80

SACHS 3337, 3338
NWO RDL 1337
001.250.0415
001.250.4515

PLATEAU 380 mm DOUBLE PUSH CLUTCH
TRUCK AND BUS LS 1935, 1936 UP UNTIL 06/94 (354 CV)
(408 CV), 1941 UP UNTIL 06/94, O371 RS, RSD MT OM 447 LA DISC
DOUBLE 2431, 2438 MT, OM-441, 2625, 2635 O-371 RS,
RSL UP UNTIL 12/93

RCH 5338 AC

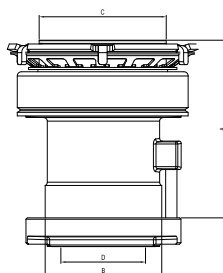


A - Altura / Height (mm) 101,0
B - Largura para o garfo / Width Fork (mm) 127,50
C - Diâmetro para mola membrana / Diameter of spring membrane (mm) 90,0
D - Diâmetro Furo / Hole diameter (mm) 60,80

SACHS 3390
NWO RDL 1338
001.250.0615, 001.250.4914, 001.250.6615, 001.250.8015
001.250.8815, 001.250.6715

PLATEAU 430 mm FAST COUPLING PULL CLUTCH
BUS O 303, O 350, O 403, O 404
TRUCK 1744, 1748, 1844, 1850, 1853, 1948, 2044, 2050,
2448, 2544, 2550, 2553, 2635, 2644, 2648, 2650, 3248, 3250,
3255, 3538, 3544, 3548, 3550, 5248 (ARGENTINO)
NBB 2638
APPLICATION SET KTA 5106

RCH 5356 AC

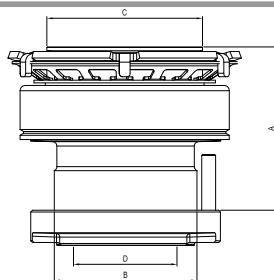


A - Altura / Height (mm) 124,60
B - Largura para o garfo / Width Fork (mm) 82,50
C - Diâmetro para mola membrana / Diameter of spring membrane (mm) 90,0
D - Diâmetro Furo / Hole diameter (mm) 60,80

SACHS 3377
NWO RDL 1356
EATON 125634 / 125635 / VALEO 10203
002.250.4115, 002.250.4715, 002.250.9815, 002.250.6715
003.250.5915

PLATEAU SACHS / VALEO 430 mm SIMPLE PULL CLUTCH
TRUCK AND BUS MB 1634, OM 457 LA 1938,
OM 501 LA 1831, 1835 L, S, LS, 1840, 1843, 2031 S, AS,
ACTROS 2038, 2525, 2531, 2540, 2543, 2631 L ACTROS,
AXOR 2035 4X2, 2040 4X2, 2544 6X2 AXOR,
NBB LS 1935, 1941, OM 447 LA, LS 1944-S, 2036, 2041, 2536,
2541, 2544, ATRON 2729 OM - 457 LA PLATAFORM
TILTING AND CONCRETE MIXER - APPLICATION SET KTA 5102

RCH 5378 AC

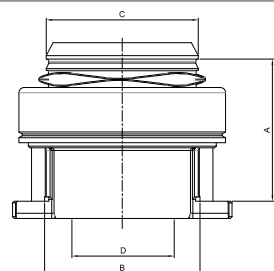


A - Altura / Height (mm) 86,60
B - Largura para o garfo / Width Fork (mm) 82,50
C - Diâmetro para mola membrana / Diameter of spring membrane (mm) 90,0
D - Diâmetro Furo / Hole diameter (mm) 60,80

SACHS 3388
NWO RDL 1378
001.250.0615

PLATEAU 380 / 400 / 430 mm DOUBLE PULL CLUTCH
LOW AXOR AXOR OM-926-LA
MB 2638 S, 2638 OM, 457 LA (380 CV), AXOR 2640, 2641 6X4,
2644 6X4, 2841
HIGHWAY, AXOR 3340, 3341 6X4, 3344 6X4, AXOR 4140,
4141 6X4, 4144 6X4 TODOS OM-457-LA
ACTROS 2546, 2646, 4844 K
MBB LS 1938, OM 457 LA
APPLICATION SET KTA 5102

RCH 5390 AC

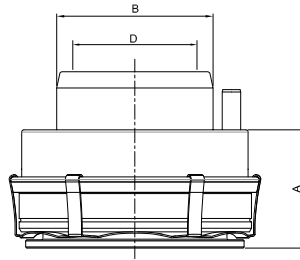


A - Altura / Height (mm) 82,50
B - Largura para o garfo / Width Fork (mm) 90,50
C - Diâmetro para mola membrana / Diameter of spring membrane (mm) 90,0
D - Diâmetro Furo / Hole diameter (mm) 60,80

SACHS 3390
NWO RDL 1424
EATON 125946
002.250.6315

PLATEAU 395 / 430 mm FAST COUPLING
PULL CLUTCH
BUS O 500 R, OM 926 LA MT ELECTRONIC OVER 09/03,
O 500 RSD OM 457 LA OVER 09/03
APPLICATION SET KTA 5106

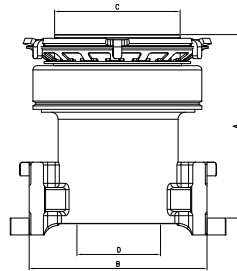
RCH 5397 AC



A - Altura / Height (mm) 52,0
B - Largura para o garfo / Width Fork (mm) 68,50
D - Diâmetro Furo / Hole diameter (mm) 50,50

SACHS 3309
NWO RDL 1397
EATON 125806
001.250.9915, 002.250.6515, 002.250.0015, 002.250.9915
PLATEAU 350 / 362 / 395 mm HIGH PULL CLUTCH BEARING
ACCELO 1016, 815, 915 OM-904-LA ELECTRONIC
MBB TRUCK/ BUS OM 366, 1420, 1620, 1720, OF 1420, 1521, 1620, 1721, OH 1621 LE, 1218, 1218 C, 1318 C, 1418 C, 1718 C
(ELECTRONIC) OM 904 LA
ATEGO OM-366-LA, 1419, 1719
ACTRON 1319, OF 1417, OF 1418, OH 1417, OH 1418, OH 1518
(ELECTRONIC) MICRO BUS LO 915, LO 916
TRUCK AND BUS 1620, 1622, 1725, 1728 (ELECTRONIC)
OM-906-LA ELECTRONIC OM-924 LA

RCH 5635

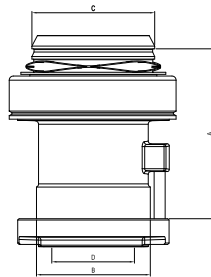


A - Altura / Height (mm) 129,0
B - Largura para o garfo / Width Fork (mm) 127,50
C - Diâmetro para mola membrana / Diameter of spring membrane (mm) 90,0
D - Diâmetro Furo / Hole diameter (mm) 60,80

EATON 125635

PLATEAU 430 mm PULL CLUTCH
MB LS-1935 O-447 LA (354 CV) GEARSHIFT ZF
MB LS-1941 OM-447 LA (408 CV) GEARSHIFT ZF
APPLICATIONN SET LICA KIT KTA 5102

RCH 5654



A - Altura / Height (mm) 123,50
B - Largura para o garfo / Width Fork (mm) 82,50
C - Diâmetro para mola membrana / Diameter of spring membrane (mm) 90,0
D - Diâmetro Furo / Hole diameter (mm) 60,80

EATON 125654

PLATEAU 430 mm FAST COUPLING PULL CLUTCH
BUS 0-400 RS /D/E, OM-457 LA GEARSHIFT ZF
BUS 0-500 R/RS/RSD, OM-926 GEARSHIFT ZF
APPLICATION SET KTA 5106

HIDRAULIC ACTUATOR MBB

REFERENCE/APPLICATION

RCY 7843



SACHS 3361
NWO RDL 1375
002.250.6615, 002.250.5115
VKCH 4843
TRW RCA 00100

712 C, 914 C, 915 C, 1215, 1218, 1315, 1318, 1620, 1714
ELECTRONIC OF 1414
ATEGO 1315, 1317, 1318, 1418, OM - 366 - A 366 - LA

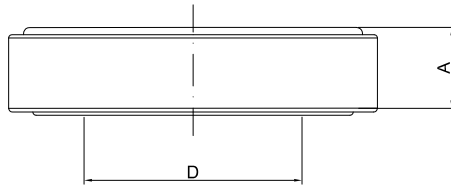
RCY 7844



002.254.2508
002.250.6615
VKCH 4844

SPRINTER 311, 313, 413 CDI ELECTRONIC
ACCELO 715

RCS 5015

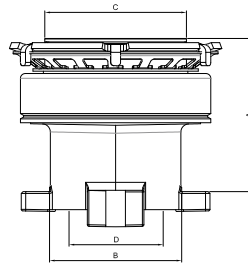


A - Altura / Height (mm) 25,0
D - Diámetro Furo / Hole diameter (mm) 69,85

133.011 - 215.131
NWO RDS 1015 (ONLY BEARINGS)
FRAG 563147 A

B 75, B 76, B 110, B 111, BR 115, BR 116, K 112, K 113, L75, L76.L 110, L 111, S 112, 75, 76, 100, 110, 111, 112

RCH 5314 AC

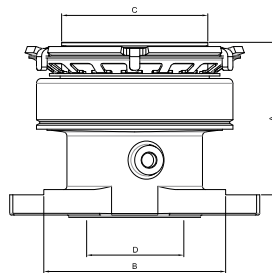


A - Altura / Height (mm) 95,50
B - Largura para o garfo / Width Fork (mm) 85,50
C - Diámetro para mola membrana / Diameter of spring membrane (mm) 90,0
D - Diámetro Furo / Hole diameter (mm) 60,80

SACHS 3353
NWO RDL 1314
1.386.160
1.393.163
132.1260
382.413

PLATEAU SACHS 430 mm PULL CLUTCH 5/6 MARCH
TRUCK AND BUS K 113, S 113
R 112 DSC 11/14 ALL, TR 112, TR 142, TR 113 DSC 11/14,
DSC 11/41 113 SERIE
R 142, R 143, T 112, T 113
APPLICATION SET KTA 5102

RCH 5329 AC

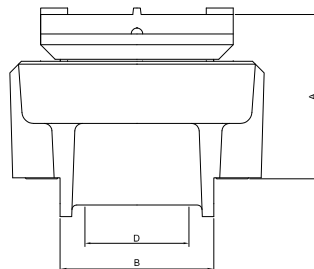


A - Altura / Height (mm) 92,0
B - Largura para o garfo / Width Fork (mm) 116,50
C - Diámetro para mola membrana / Diameter of spring membrane (mm) 90,0
D - Diámetro Furo / Hole diameter (mm) 60,80

SACHS 3352
NWO RDL 1329
EATON 125708
1.319.344, 1.393.161, 1.321.2155, 1.545.062, 1.407.430

PLATEAU EATON / SACHS 430 mm PULL CLUTCH
7/8 MARCH
TRUCK P 93 (ARGENTINE)
TRUCK R 113, T 113, TH 113, TH 143, R 143
BUS S 113 ...1996
APPLICATION SET KTA 5102

RCH 5372

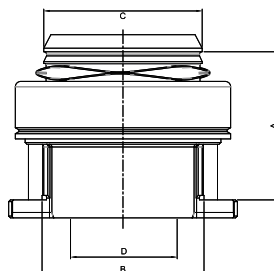


A - Altura / Height (mm) 84,0
B - Largura para o garfo / Width Fork (mm) 79,8
D - Diámetro Furo / Hole diameter (mm) 60,0

SACHS 3375 / 3075
NWO RDL 1372
352.750
1.367.604

PLATEAU SACHS / VALEO 420 mm
PUSH CLUTCH
T 112, R 112, R 142, R 143 DSC 11/14 ALL
K 113 DSC 5/6 ALL MARCH S 112, 113, L 113, DSC 11
5/6 ALL MARCH
K 112, K 113, S 112, S 113, BR-116 DN/DS-11

RCH 5422 AC



A - Altura / Height (mm) 82,50
B - Largura para o garfo / Width Fork (mm) 90,50
C - Diámetro para mola membrana / Diameter of spring membrane (mm) 90,0
D - Diámetro Furo / Hole diameter (mm) 63,20

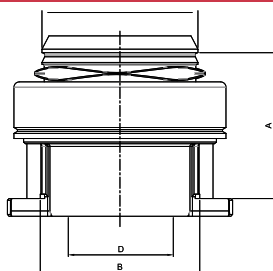
SACHS 3350
NWO RDL 1422
EATON 125709
1.728.165, 1.499.770, 1.479.576, 1.749.125, 1.851.631

PLATEAU EATON / SACHS / VALEO 430 mm
FAST COUPLING PULL CLUTCH
P 94, P 114, P 124, R 114, R 124, T 114, 124
BUS K 124, K 94, L 94
P-230-250-270-310-340-360-420
K-270, K-310, K-340, K-380, K-420
G-380, 400, 420, 440, 470, 480
R-440, 470, 500, 560, 620
APPLICATION SET KTA 5106

RCH 5522 AC



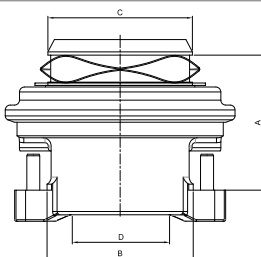
RCH 5522



A - Altura / Height (mm) 92,50
B - Largura para o garfo / Width Fork (mm) 90,50
C - Diâmetro para mola membrana / Diameter of spring membrane (mm) 90,0
D - Diâmetro Furo / Hole diameter (mm) 60,80

SCANIA TRUCK S 230, HB 4/2 6/2, F 250/310
VALEO SYSTEM 430 mm
VALEO 1493990
URBAN AND HIGHWAY FROM MOTOR

RCH 5722 AC



A - Altura / Height (mm) 79,50
B - Largura para o garfo / Width Fork (mm) 91,0
C - Diâmetro para mola membrana / Diameter of spring membrane (mm) 90,0
D - Diâmetro Furo / Hole diameter (mm) 63,20

VALEO 830010

SCANIA 1499770

SCANIA TRUCK GENERATION 5
VALEO SYSTEM
BUS K 94 / K 124 / K 310
TRUCK P 94 / P 114 / T 114 / T 124 / P 124
R 124

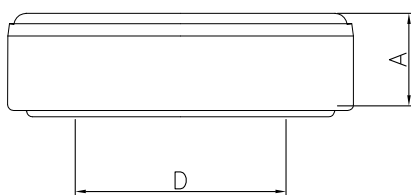
APPLICATION SET KTA 5113

TOYOTA HOUSINGS

TECHNICAL DRAWING

REFERENCE/APPLICATION

RCS 5007

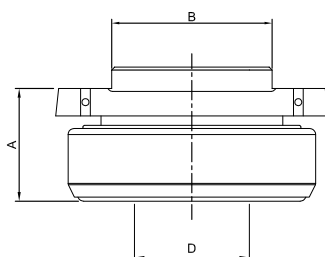


A - Altura / Height (mm) 21,80
D - Diâmetro Furo / Hole diameter (mm) 50,0

NWO RDS 1007
90.023.6301
VKC 2044
FRAG 200 216

TOYOTA BANDEIRANTES OVER 94

RCL 5007



A - Altura / Height (mm) 36,9
B - Largura para o garfo / Width Fork (mm) 52,8
D - Diâmetro Furo / Hole diameter (mm) 38,0

NWO RDL 1007
90.023.6301

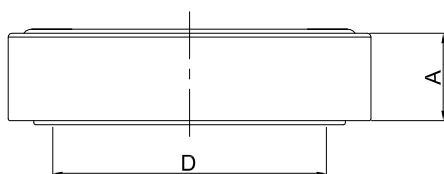
BEARING WITH HOUSING TOYOTA
BANDEIRANTES OVER 94
PUSH CLUTCH

VALTRA VALMET

TECHNICAL DRAWING

REFERENCE/APPLICATION

RCS 5019

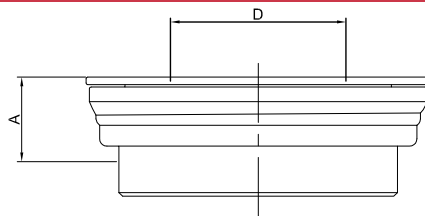


A - Altura / Height (mm) 22,0
D - Diâmetro Furo / Hole diameter (mm) 55,0

NWO RDS 1019
164.480
164.481

86, 110, UP UNTIL 99 / 110 / 118 / 128 BF 65 / BF 75
VALTRA 685 / 685C / 785 / 785C / BH-180
ONLY BERARINGS

RCH 5200



A - Altura / Height (mm) 23,0
D - Diámetro Furo / Hole diameter (mm) 62,0

NWO RDL 1600
817.812.00

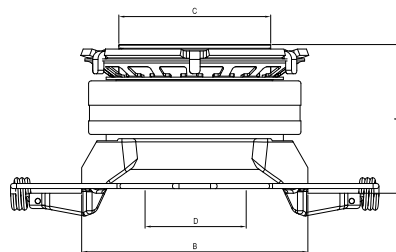
PLATEAU SACHS 325, 330, 345 mm
VALTRA 685, 685-C, 785, 785-C, 880, BH-180
CAFEEIRO - 4X4 - 885, 990 4X4 BH
BM - VT 1380, 1680, 1880, 1580, 1280, 1780 / R

VOLVO
HOUSINGS

DISEÑO TÉCNICO

REFERENCIA / APLICACION

RCH 5315

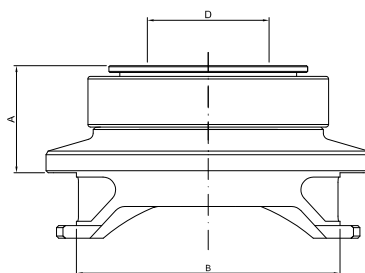


A - Altura / Height (mm) 84,30
B - Largura para o garfo / Width Fork (mm) 134,0
C - Diámetro para mola membrana / Diameter of spring membrane (mm) 90,0
D - Diámetro Furo / Hole diameter (mm) 58,50

SACHS 3355
NWO RDL 1315
165.5289
166.8333
166.9912
319.2226

PLATEAU 430 mm PULL CLUTCH
B 58 TD 101 GC, B58 TD 101 C OVER 91
B 10 M THD 101 KC OVER 91 - B 10M 6X2 THD
101 MC, NL 12/400
APPLICATION SET KTA 5102

RCH 5316

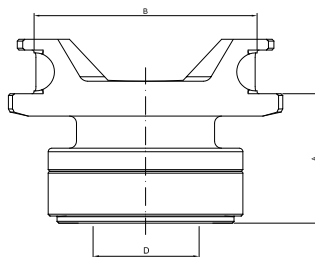


A - Altura / Height (mm) 51,0
B - Largura para o garfo / Width Fork (mm) 125,80
D - Diámetro Furo / Hole diameter (mm) 66,10

SACHS 3368
NWO RDL 1316
267.156, 152.7693, 165.5316, 352.221, 811.2167, 811.2168,
811.2174

PLATEAU 350 / 380 mm PUSH CLUTCH DOUBLE
N 10 HTD 101 G 275 CV OVER 1986, N 12 TD 120/121
HASTA 89, B 10 HIGHWAY
D 100 B - F7 / F10 / F12
F 88 / F 89
TRUCK FB / G / N7 / TD 100 / TD 120 / TD 121

RCH 5317

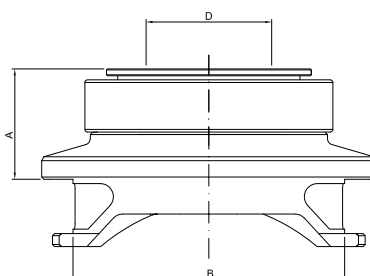


A - Altura / Height (mm) 72,50
B - Largura para o garfo / Width Fork (mm) 125,80
D - Diámetro Furo / Hole diameter (mm) 58,20

SACHS 3374
NWO RDL 1317
165.5287

PLATEAU 420 mm PUSH CLUTCH
B 58 M THD 100 EC 250 / 275 CV ALL,
URBAN BUS OVER 04/91B 10 OVER 04/91

RCH 5318

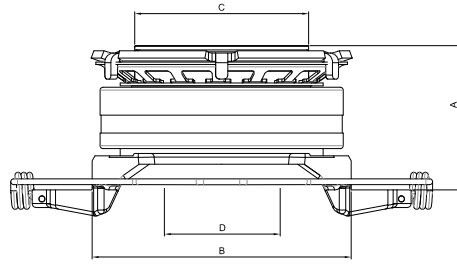


A - Altura / Height (mm) 54,50
B - Largura para o garfo / Width Fork (mm) 125,80
D - Diámetro Furo / Hole diameter (mm) 58,20

SACHS 3372
NWO RDL 1318
165.5288

PLATEAU 350 mm DOUBLE CLUTCH (BI DISC)
PUSH
B 10 M BUS HIGHWAY 87 A 03/91
THD 101 KC 1987 OVER 01/91

RCH 5319

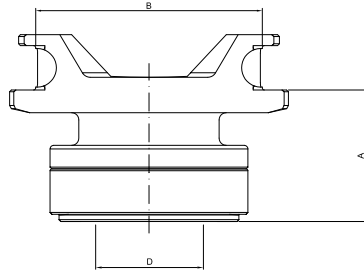


A - Altura / Height (mm) 74,30
B - Largura para o garfo / Width Fork (mm) 133,80
C - Diâmetro para mola membrana / Diameter of spring membrane (mm) 90,0
D - Diâmetro Furo / Hole diameter (mm) 66,80

SACHS 3060, 3360
NWO RDL 1319
167.2944, 165.5843, 166.8921, 166.9832, 319.2222
569.157, 205.69157, 360.410

PLATEAU 380 / 400 mm DOUBLE CLUTCH (BI DISC) PULL
NL 10, N 12, FH 12 6X4 GLOBETROTTER D 12 OVER 380 UNTIL 96 NL
HARD OVER 2006 D-12-D
TRUCK FH FM NH 12 FM-440 FM-480
APPLICATION SET KTA 5103

RCH 5322

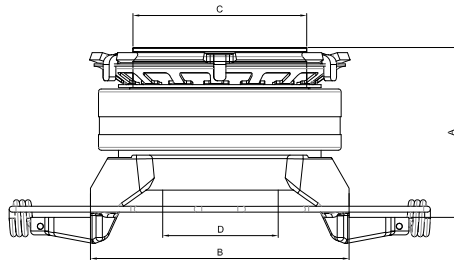


A - Altura / Height (mm) 72,50
B - Largura para o garfo / Width Fork (mm) 125,80
D - Diâmetro Furo / Hole diameter (mm) 66,10

SACHS 3386
NWO RDL 1322
152.7695

PLATEAU 420 mm, PUSH CLUTCH
N 10
TRUCK NH TD 101 G (275 CV) 01/80 A 12/84

RCH 5325

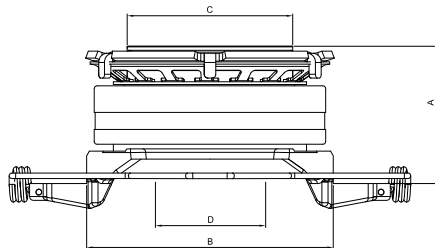


A - Altura / Height (mm) 87,30
B - Largura para o garfo / Width Fork (mm) 133,80
C - Diâmetro para mola membrana / Diameter of spring membrane (mm) 90,0
D - Diâmetro Furo / Hole diameter (mm) 66,80

SACHS 3363
NWO RDL 1325
EATON 125637
165.5825, 165.5732, 166.7258, 166.8923, 166.9833, 167.2847,
167.2946, 319.2216, 319.2217, 319.2223, 811.2169

PLATEAU 430 mm (SIMPLE CLUTCH) PULL
FH 12 4X2 ALL, FH / FM / NH 12 4X2 E
6X2 GLOBETROTTER TILL 2002, TD 122,
TD 101 B 12 B, B 12 R, 4X2 E 6X4
HIGHWAY TILL 06/07 CX ZF
NH 12 4X2 6X2 OVER 2003
APLICA KIT KTA 5102

RCH 5352

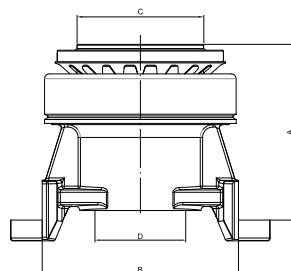


A - Altura / Height (mm) 77,0
B - Largura para o garfo / Width Fork (mm) 133,80
C - Diâmetro para mola membrana / Diameter of spring membrane (mm) 90,0
D - Diâmetro Furo / Hole diameter (mm) 58,50

SACHS 3365
NWO RDL 1352
166.8930
166.8938
167.2948
319.2224

GEARSHIFT ZF PLATEAU 430 mm PULL
CLUTCH
MM B7, B 10 B, B10 BLE B10 M, B 12 MOTOR TD 73 E -
B7 R
ALL, FS 7
APPLICATION SET KTA 5102

RCH 5360 AC

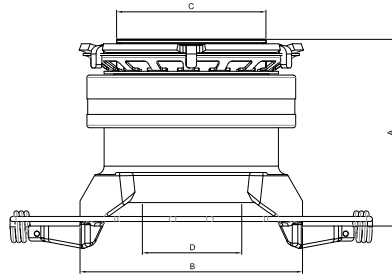


A - Altura / Height (mm) 112,0
B - Largura para o garfo / Width Fork (mm) 124,0
C - Diâmetro para mola membrana / Diameter of spring membrane (mm) 80,0
D - Diâmetro Furo / Hole diameter (mm) 57,50

SACHS 3359
NWO RDL 1360 AC

PLATEAU 380 / 395 mm GEARSHIFT AUTO CENTER
PULL CLUTCH
VM 17, VM 23 MWM 6.10 ALL, VM 210 4X2,
6X2 GEARSHIFT EATON FT 0706 CVM 260 4X2,
6X2 GEARSHIFT EATON FT 0909 B
VM 260 R
APPLICATION SET KTA 5101

RCH 5394

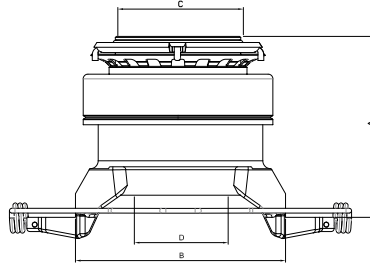


A - Altura / Height (mm) 111,50
 B - Largura para o garfo / Width Fork (mm) 133,80
 C - Diâmetro para mola membrana / Diameter of spring membrane (mm) 90,0
 D - Diâmetro Furo / Hole diameter (mm) 66,80

SACHS 3308
NWO RDL 1394
EATON 125643
167.2964, 20.569.161, 319.2221

PLATEAU 430 mm EATON / SACHS GEARSHIFT
VOLVO VT PULL CLUTCH
FH 12 4X2 E 6X2 GLOBETROTTER UNTIL 2002- NH 12 4X2 E 6X2
OVER 2003 FM
APPLICATION SET KTA 5102

RCH 5396 AC

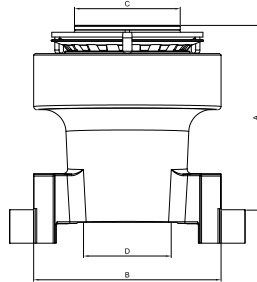


A - Altura / Height (mm) 114,40
 B - Largura para o garfo / Width Fork (mm) 133,80
 C - Diâmetro para mola membrana / Diameter of spring membrane (mm) 80,0
 D - Diâmetro Furo / Hole diameter (mm) 66,60

NWO RDL 1396
EATON 125641
20722523

PLATEAU 395 mm PULL CLUTCH
VM 310 4X2 6X4 ALL
APPLICATION SET KTA 5101

RCH 5563

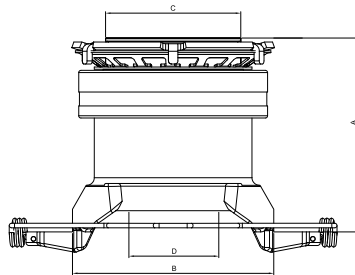


A - Altura / Height (mm) 121,0
 B - Largura para o garfo / Width Fork (mm) 123,80
 C - Diâmetro para mola membrana / Diameter of spring membrane (mm) 70,0
 D - Diâmetro Furo / Hole diameter (mm) 57,5

EATON 125563 / 125715

PLATEAU 365 mm GEARSHIFT
PULL CLUTCH
VM 17 206 CV, VM 23 240 CV, VM 210 4X2 R, VM 210 6X2 R,
VM 260 4X2, VM 260 6X2
APPLICATION SET KTA 5105

RCH 5567

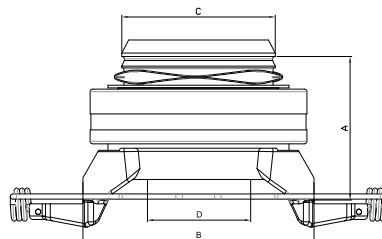


A - Altura / Height (mm) 128,0
 B - Largura para o garfo / Width Fork (mm) 133,80
 C - Diâmetro para mola membrana / Diameter of spring membrane (mm) 80,0
 D - Diâmetro Furo / Hole diameter (mm) 66,80

SACHS KIT 6295

PLATEAU 395 mm PULL CLUTCH SACHS
GEARSHIFT EATON ET 8908 LL
VM 310 4X2 6X4 MWM 7 A
310 VT, 2214 B ALL
APPLICATION SET KTA 5101

RCH 5655

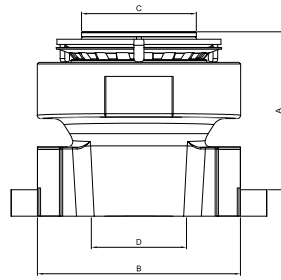


A - Altura / Height (mm) 86,30
 B - Largura para o garfo / Width Fork (mm) 133,80
 C - Diâmetro para mola membrana / Diameter of spring membrane (mm) 90,0
 D - Diâmetro Furo / Hole diameter (mm) 66,80

EATON 125655

PLATEAU 430 mm FAST COUPLING PULL CLUTCH
BUS B 12 B4X2 E 6X2 TD 122 FL,
B 12 R 4X2 E 6X2 TD 122 FL GEARSHIFT ZF
APPLICATION SET KTA 5106

RCH 5716

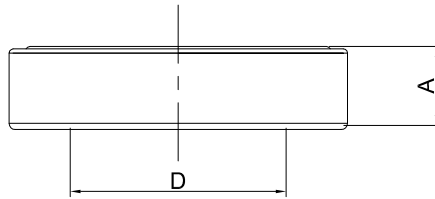


A - Altura / Height (mm) 95,50
 B - Largura para o garfo / Width Fork (mm) 123,80
 C - Diâmetro para mola membrana / Diameter of spring membrane (mm) 70,0
 D - Diâmetro Furo / Hole diameter (mm) 57,5

EATON 125716

PLATEAU 395 mm GEARSHIFT PULL CLUTCH
 BUS B 27 MWM
 TRUCK VM 270 6X4 6X2, VM 260 6X4 4X2
 APPLICATION SET KTA 5105

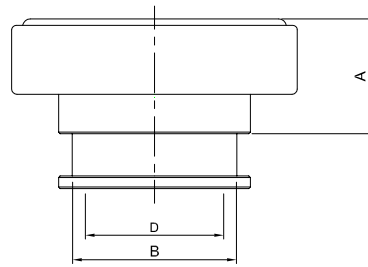
RCS 5009



D - Diâmetro Furo / Hole diameter (mm) 52,40
 A - Altura / Height (mm) 20,0

SACHS 3367
NWO RDS 1009
2.991.380
FAG 526468
 6.80, 6.90, 6.90 S, 7.90 S

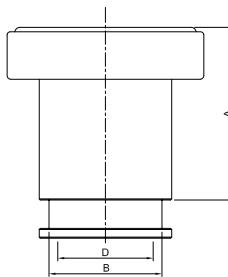
RCL 5035



A - Altura / Height (mm) 36,70
 B - Largura para o garfo / Width Fork (mm) 52,80
 D - Diâmetro Furo / Hole diameter (mm) 44,60

SACHS 3307 / 3367
NWO RDC 1035
EATON 125802
82TU7548-A
TEG 141.165
 PLATEAU 325 / 330 mm PULL CLUTCH
 7-100, 8-100, 8-140 MWM 4.10 NA, 8-150, 9-150 - 12-140 H,
 12-140 T MWM 4.10 TCA, 12-160, 13-130, 14-140
8140 / 8150 / 9150
 V.W 6.80, 6.90, 6.140, 7.110, 7.120, 7.140, 8.120-L80, 12.140,
 13.130, 13.150, 14.140 MICRO BUS 8.120 OD
MWM 13"

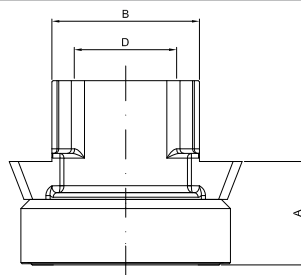
RCL 5037



A - Altura / Height (mm) 80,0
 B - Largura para o garfo / Width Fork (mm) 52,80
 D - Diâmetro Furo / Hole diameter (mm) 44,60

SACHS 3373
NWO RDC 1037
EATON 125804
2 SK 141.165
Xc457548 AA
 PLATEAU 325 / 330 mm PULL CLUTCH
 8-150 EOD, 9-150 EOD CUMMINS INTERACT 4.0 OVER 2004
CUMMINS 13"

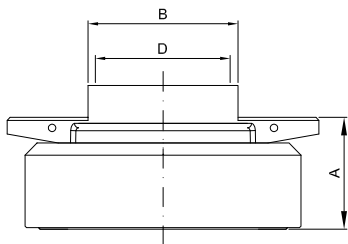
RCH 5040



A - Altura / Height (mm) 45,0
 B - Largura para o garfo / Width Fork (mm) 64,80
 D - Diâmetro Furo / Hole diameter (mm) 44,80

SACHS 3040
EATON 125919
OR 220 141165
2PO 141165
 V.W. 5150, 8160, 9160, 8160 OD, 9160 OD, 3.8 2012 >...
MTR CUMMINS ISF EURO 5
TRANSMISSION ZF S 5420 HD
APPLICATION PLATEAU 1085 SACHS
MICRO BUS 8160 OD, 9160 OD
PLATEAU 330 mm PULL CLUTCH

RCH 5323

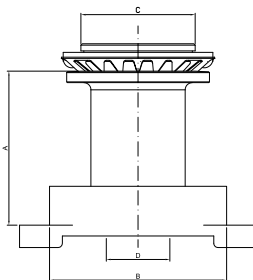


A - Altura / Height (mm) 36,50
B - Largura para o garfo / Width Fork (mm) 49,80
D - Diâmetro Furo / Hole diameter (mm) 44,50

SACHS 3362
NWO RDL 1323
2T2 141.265
2T2 141.265 H
T 13.141.161

PLATEAU 325 mm PUSH CLUTCH
15-180, 17-250 CONSTELLATION 11-130, 13-130, 11-140, 1160,
7-110, 8100, 8200, 12140, 12140 BT, 12140 H, 12140 T,
12180, 13130, 13150 E, 13170, 13170 E, 13180, 13180 E,
13210, 14140, 14150, 14170, 14180, 14200, 14220 E

RCH 5349 SM

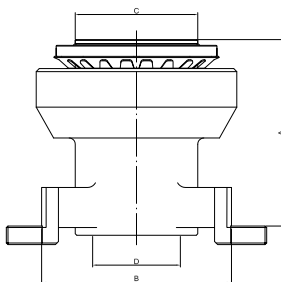


A - Altura / Height (mm) 107,0
B - Largura para o garfo / Width Fork (mm) 124,0
C - Diâmetro para mola membrana / Diameter of spring membrane (mm) 80,0
D - Diâmetro Furo / Hole diameter (mm) 44,50

SACHS 3346
NWO RDL 1349
E 3HN 7580 AA

BETA BUS 16.180
APPLICATION GEARSHIFT
APPLICATION SET KTA 5101

RCH 5350

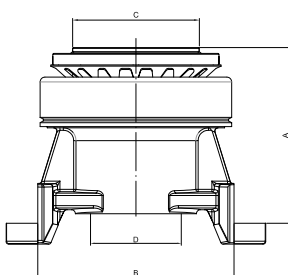


A - Altura / Height (mm) 119,30
B - Largura para o garfo / Width Fork (mm) 124,0
C - Diâmetro para mola membrana / Diameter of spring membrane (mm) 80,0
D - Diâmetro Furo / Hole diameter (mm) 57,50

NWO RDL 1350
2TB141.165, 2RP 141.037 C, LUK 500.089.10
REF 137.0002-10

PLATEAU 365 mm GEARSHIFT LUK PULL CLUTCH
TRUCK VW 12-170, 14-150, 14-170, 14-180, 14-190,
14-200, 15-180, 15-190, 16-170, 16-180, 16-220 ALL
UNTIL 220 CV
BUS 16-180, 16-210, 17-210 OD TO PLATEAU LUK 365MM
V.W TITAN 18-310, 23-310, TRACTOR 16-210 CD, 17-210 FOT,
17-310 OT, 18-320 FOT, WARKER 14-210, 14-220, 16-220, 16-300
17-210, 17-220, 17-310, 23-210, 23-220, 23-310, 24-220, 24-250,
26-220, 26-260, 26-300, 31-320, 40-300
APPLICATION SET KTA 5101

RCH 5360 AC

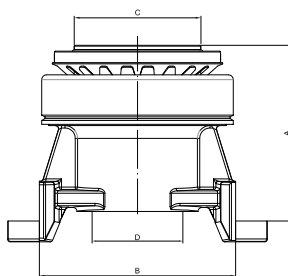


A - Altura / Height (mm) 112,0
B - Largura para o garfo / Width Fork (mm) 124,0
C - Diâmetro para mola membrana / Diameter of spring membrane (mm) 80,0
D - Diâmetro Furo / Hole diameter (mm) 57,50

SACHS 3359
NWO RDL 1360 AC
2RP 141.037 C

PLATEAU 350 / 380 / 395 mm AUTO CENTER PULL
CLUTCH GEARSHIFT
TRUCK AND BUS VW 12-170, 12-180, 13-180, 13-170, 13-190,
14-150, 14-170, 14-180, 14-190, 16-800, 16-200, 26-260, 31-260 E,
WORKER 14-210, 14-220, 16-220, 16-300, 17-210, 17-220, 17-250,
17-310, 23-210, 23-220, 23-310 TITAN, 17-210 FOD, 16-210 CD,
17-310 OT, 17-260, 18-320 FOT, 18-310 TITAN TRACTOR, 26-310
TITAN(6X4), 15-180, 15-190, 17-260, 18-320 FOT
APPLICATION SET KTA 5101

RCH 5360

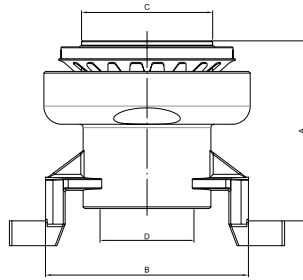


A - Altura / Height (mm) 112,0
B - Largura para o garfo / Width Fork (mm) 124,0
C - Diâmetro para mola membrana / Diameter of spring membrane (mm) 80,0
D - Diâmetro Furo / Hole diameter (mm) 44,50

SACHS 3359
NWO RDL 1360
2RP 141.037 C

PLATEAU 350 / 380 mm GEARSHIFT PULL CLUTCH
TRUCK AND BUS VW 12-170, 12-180, 13-180, 13-170, 13-190,
14-150, 14-170, 14-180, 14-190, 16-800, 16-200, 26-260, 31-260 E,
WORKER 14-210, 14-220, 16-220, 16-300, 17-210, 17-220, 17-250,
17-310, 23-210, 23-220, 23-310 TITAN, 17-210 FOD, 16-210 CD,
17-310 OT, 17-260, 18-320 FOT, 18-310 TITAN TRACTOR, 26-310
TITAN(6X4), 15-180, 15-190, 17-260, 18-320 FOT
APPLICATION SET KTA 5101

RCH 5360 SM

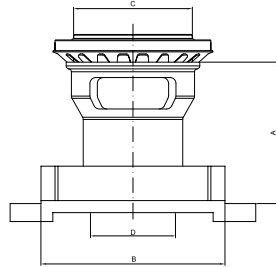


A - Altura / Height (mm) 112,0
 B - Largura para o garfo / Width Fork (mm) 124,0
 C - Diâmetro para mola membrana / Diameter of spring membrane (mm) 80,0
 D - Diâmetro Furo / Hole diameter (mm) 57,50

SACHS 3348
 NWO RDL 1360 SM
 ZZO 141.707 A

PLATEAU 350 / 380 mm PULL CLUTCH
 TRUCK AND BUS VW 12-170, 14-170, 14-200, 16-180 ALL,
 VW 16-170, 16-200 APÓS 06/97 14-210, 14-220, 16-210, 16-220, 16-300,
 17-210, 17-220, 17-310, 23-310, 24-220, 24-250, 26-220 TITAN, 18-310 35-300
 TITAN TRACTOR, 24-250, 26-300, 26-310, 40-300(4X2, 6X4) TITAN
 31260, 31260 E
 APPLICATION SET KTA 5101

RCH 5363 SM

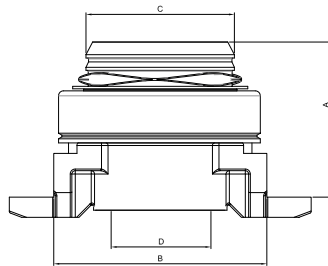


A - Altura / Height (mm) 94,50
 B - Largura para o garfo / Width Fork (mm) 124,0
 C - Diâmetro para mola membrana / Diameter of spring membrane (mm) 80,0
 D - Diâmetro Furo / Hole diameter (mm) 44,50

NWO RDL 1363
 2RP 141.037 B

GEARSHIFT PLATEAU 365 LUK PULL CLUTCH
 VW 12-170, 14-150, 14-200, 16-170, 16-180, 16-200
 ALL TILL 220 CV BUS 16-180, 16-210, 17-210 OD
 BUS 16180, 16210, 17210 OD
 APPLICATION SET KTA 5101

RCH 5366 AC

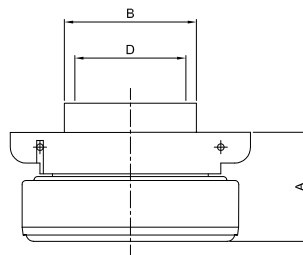


A - Altura / Height (mm) 91,50
 B - Largura para o garfo / Width Fork (mm) 127,80
 C - Diâmetro para mola membrana / Diameter of spring membrane (mm) 90,0
 D - Diâmetro Furo / Hole diameter (mm) 60,80

SACHS 3396
 NWO RDL 1366
 EATON 125710
 2T2 141.165 A
 2T2 141.165 J
 M82 141.165 A

PLATEAU 430 mm COUPLING PULL CLUTCH
 CONSTELLATION 17-320, 19-320, 19-340, 19-360, 19-370,
 19-380 E, 19-240 E, 19-420 E, 24-220, 24-320, 24-250, 25-320,
 25-320 E, 25-340 E, 25-360 E, 25-370 E, 25-380 E, 25-420 E,
 26-360 E, 31-320 E, 31-330, 31-340 E, 31-370 E, 31-370, 31-380 E,
 31-390, TITAN
 TRACTOR 19-320 CX ZF 16S 1650, 16S 1685 TD
 APPLICATION SET KTA 5106

RCH 5380

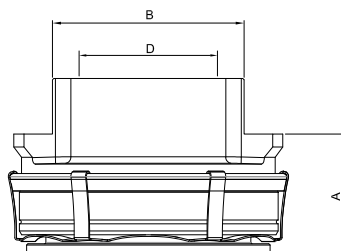


A - Altura / Height (mm) 37,30
 B - Largura para o garfo / Width Fork (mm) 49,8
 D - Diâmetro Furo / Hole diameter (mm) 44,50

SACHS 3371
 NWO RDL 1380
 357.607
 O 2.991.380
 2RO 141.211

PLATEAU 280 mm PULL CLUTCH
 6.80, 6.90, 6.90 P, 6.90 S, 7.90 S, 7.95 S, 7.100, 7.110 S,
 6800, 6900, 7900, 7905, 7993
 MWM 2294 PERKINS 4236

RCH 5398

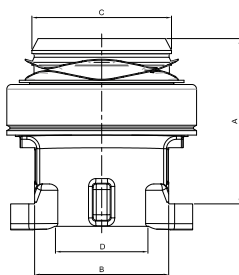


A - Altura / Height (mm) 46,0
 B - Largura para o garfo / Width Fork (mm) 74,80
 D - Diâmetro Furo / Hole diameter (mm) 57,50

2 T2 141.165 H

PLATEAU 395 mm PULL CLUTCH
 13180, 15180, 17250, 24250 E, CONSTELLATION

RCH 5498 AC

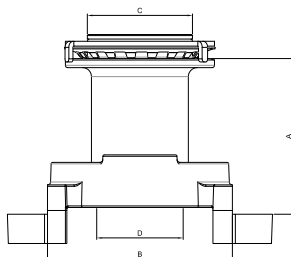


A - Altura / Height (mm) 104,50
 B - Largura para o garfo / Width Fork (mm) 85,50
 C - Diámetro para mola membrana / Diameter of spring membrane (mm) 90,0
 D - Diámetro Furo / Hole diameter (mm) 63,20

SACHS 3398
EATON 125944
2U2141165 B

PLATEAU 1596 COUPLING 430 mm PULL CLUTCH
TRUCK V.W CONSTELLATION 17330, 19330, 19390,
19400, 24339, 25330, 25400, 31330, 31390, 31400,
OVER 2012 (ALL)
MOTOR CI CUMMINS ISL 9 EURO V
MAN TGX 28440, 29440, 33440 MAN 440TX
26440 GEARSHIFT ZF 2012 ...
SET SACHS 6168
APPLICATION SET KTA 5106

RCH 5562 SM

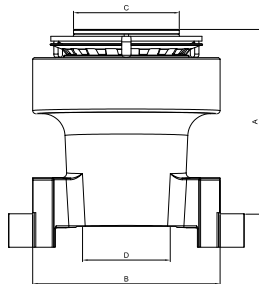


A - Altura / Height (mm) 103,50
 B - Largura para o garfo / Width Fork (mm) 123,80
 C - Diámetro para mola membrana / Diameter of spring membrane (mm) 70,0
 D - Diámetro Furo / Hole diameter (mm) 44,5

EATON 125562

PLATEAU 365 mm GEARSHIFT PULL CLUTCH
VW 12-170, 12-180, 13-150, 13-170, 13-180 WORKER, 13-190,
14-150,14-170, 14-180, 14-190, 14-200, 14-210, 14-220, 15-170,
15-180 WORKER, 15-190, 16-170, 16-180, 16-200, 16-210, 16-220,
17-210, 17-220, 23-210, 23-220, 24-220 6X2, BUS 16-180,
16-210, 17-210, 17-240
APPLICATION SET KTA 5105

RCH 5563

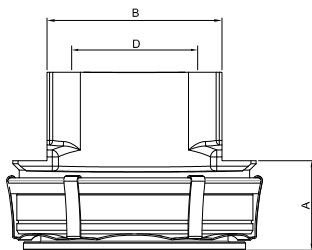


A - Altura / Height (mm) 121,0
 B - Largura para o garfo / Width Fork (mm) 123,80
 C - Diámetro para mola membrana / Diameter of spring membrane (mm) 70,0
 D - Diámetro Furo / Hole diameter (mm) 57,5

EATON 125563

PLATEAU 365 mm GEARSHIFT PULL CLUTCH
VW 12-170, 12-180, 13-150, 13-170, 13-180 WORKER, 13-190, 14-150,
14-170, 14-180, 14-190, 14-200, 14-210, 14-220, 15-170, 15-180
WORKER,15-190, 16-170, 16-180, 16-200, 16-210, 16-220, 17-210,
17-220, 23-210, 23-220, 24-220 6X2, BUS 16-180, 16-210, 17-210,
17-240, 23210, 23220
APPLICATION SET KTA 5105

RCH 5565

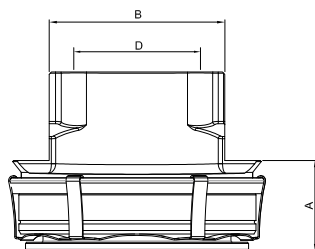


A - Altura / Height (mm) 37,0
 B - Largura para o garfo / Width Fork (mm) 74,80
 D - Diámetro Furo / Hole diameter (mm) 57,50

EATON 125655
2T2 141 165-K

PLATEAU SACHS 395 mm PULL CLUTCH
BUS 17-230, 17-260 GEARSHIFT ZF AS 1010 BO AS TRONIC
(MECHANIC) 17260 - EOT/68D, 19-320
FROM 2010
SET SACHS 6414
APPLICATION ROLLED FORK

RCH 5566

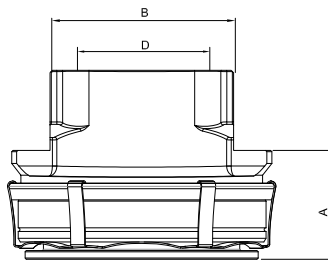


A - Altura / Height (mm) 37,0
 B - Largura para o garfo / Width Fork (mm) 74,80
 D - Diámetro Furo / Hole diameter (mm) 57,50

SACHS 3344
EATON 125916

PLATEAU SACHS 395 mm ROLLED FORK
PUSH CLUTCH
BUS VW 15-190, 17-230, 17-230 EOD, 17-260 EOD
GEARSHIFT ZF NEW, 17-190 (MOTOR MAN), 17-260 EOT,
MWM ACTON 6.12
TCAE, (AUTOMATIC) 65 1010

RCH 5597

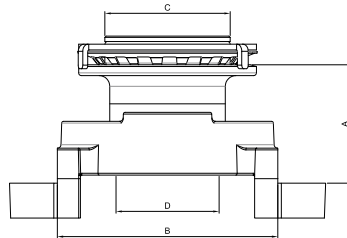


A - Altura / Height (mm) 46,0
B - Largura para o garfo / Width Fork (mm) 74,80
D - Diâmetro Furo / Hole diameter (mm) 57,50

SACHS 3397
NWO RDL 1427
EATON 125793
2T2 141.165 E, 2T2 141.165 H

PLATEAU 362 / 395 mm PULL CLUTCH
CONSTELLATION 13-180 E, 15-180 E, 17-250, 17-260 E,
VW 13-180, 15-180 E
CONSTELLATION MWM 17-250, 23-260, 24-250 6X2,
24-260 E, 26-280, 31-280 EURO 5
CONSTELLATION CUMMINS 17-250 E,
17-190 MOTOR MAN / 17-280 E MAN ...2012

RCH 5650 SM

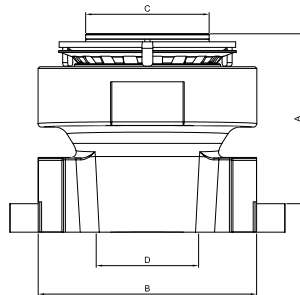


A - Altura / Height (mm) 66,0
B - Largura para o garfo / Width Fork (mm) 123,80
C - Diâmetro para mola membrana / Diameter of spring membrane (mm) 70,0
D - Diâmetro Furo / Hole diameter (mm) 44,5

EATON 125650

PLATEAU 365 mm PUSH CLUTCH DOUBLE
VW 16-300, 17-250, 17-300, 17-310, 18-310, 23-310, 24-220 6X4,
24-250, 26-220, 26-260, 26-260 E, 26-300, 31-260, 31-310, 35-300,
35-300 H, 40-300
APPLICATION SET KTA 5105

RCH 5716

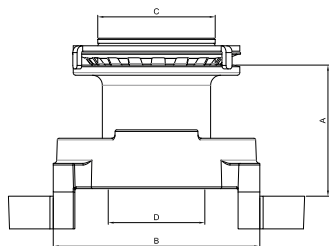


A - Altura / Height (mm) 95,50
B - Largura para o garfo / Width Fork (mm) 123,80
C - Diâmetro para mola membrana / Diameter of spring membrane (mm) 70,0
D - Diâmetro Furo / Hole diameter (mm) 57,5

EATON 125716
NWO RDL 1362
2RP 141037 C, 40-30026.260 E

PLATEAU 395 mm GEARSHIFT PULL CLUTCH
VW 16-200, 16-300, 16-800, 17-250, 17-260, 17-300, 17-310, 18-310,
23-310, 24-220 6X4, 24-250, 26-200, 26-260, 26-260 E, 26-300,
31-260, 31-310, 35-300, 35-300 H, CONSTELLATION 6X4
MWM 2008, BUS 18-310 OT, TRACTOR 26-310,
WARKER 14-210, 14-220, 16-220, 17-210, 17-220, 17-310, 23-210,
23-220, 23-310, 24-220, 24-250, 26-220.
12-170, 12-180, 13-170, 13-180, 13-190, 14-150, 14-170, 14-190
EATON 15-180, 15-190, 16-170
APPLICATION SET KTA 5105

RCH 5717 SM

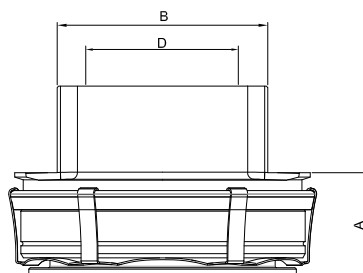


A - Altura / Height (mm) 78,0
B - Largura para o garfo / Width Fork (mm) 123,80
C - Diâmetro para mola membrana / Diameter of spring membrane (mm) 70,0
D - Diâmetro Furo / Hole diameter (mm) 44,5

EATON 125717

PLATEAU 395 mm GEARSHIFT PULL CLUTCH
VW 16-300, 17-250, 17-300, 17-310, 18-310, 23-310, 24-220 6X4,
24-250, 26-220, 26-260, 26-260 E, 26-300, 31-260, 31-310, 35-300,
35-300 H, 40-300
APPLICATION SET KTA 5105

RCH 5739



A - Altura / Height (mm) 37,0
B - Largura para o garfo / Width Fork (mm) 74,80
D - Diâmetro Furo / Hole diameter (mm) 57,50

SACHS 3739
2T2140165 - K
APPLICATION SACHS 6261 - 6259 - 6758 - 6174
PLATEAU 395mm PUSH CLUTCH
BOX ZF 1010BO > 2012
BOX ZF ASTRONIC 17280 AM
BOX ZF 6S-1010BO > 2012
V.W. BUS 15190OD MAN 462
17230 AMT 17230 OD - 17280 E
CONSTELLATION 24280 - E > 2012
BOX ZF 9S 1110 TD MAN 6.9L / 4.6L
MWM EURO III 7.2L
APPLICATION ROLLED FORK

AGRALE

CLUTCH FORK

TECHNICAL DRAWING

REFERENCE/APLICACION



GDL 350.05

EATON 997078

FORK EATON
PLATEAU SACHS 380 mm
PLATEAU EATON 365 MM
NO ROLLED (FIX)

EXG 351



EXG 352



TJG 141.865

SHORT SHAFT OF CLUTCH APPLICATED IN THE FORK
GDL 350.05

TJG 141.863

LONG SHAFT OF CLUTCH APPLICATED TO THE FORK
GDL 350.05

FORD

HORQUILLAS DE EMBRAGUE

REFERENCE/APLICACION



GDL 350.05

TJG 141.861
2RP 141.861 A
EATON 997078

FORK EATON PLATEAU SACHS
350 / 380 / 395 mm
PLATEAU EATON 365 / 395 mm
NO ROLLED (FIX)
V.W 14150 / 14200 / 14220 / 16170 / 16220
24220 / 24250

EXG 351



EXG 352



TJG 141.865

SHORT SHAFT OF CLUTCH APPLICATED TO THE FORK
GDL 350.05
CARGO 1215, 1415, 1419, 1422, 1617
BUS B 1618, B 1622, B 2322

TJG 141.863

LONG SHAFT OF CLUTCH APPLICATED TO THE FORK
GDL 350.05
CARGO 1215, 1415, 1419, 1422, 1617
BUS B 1618, B 1622, B 2322



GDL 350.7

TEG 141.857
EATON

F 1000, F 2000, F 4000, F 11000,
F 22000
(WITHOUT PIN)
CARGO 814 / 815



GDL 350.13

BE 2Y 7515 A

F 1000, F 4000 HASTE LONG 308 MM

FIAT

CLUTCH FORK

REFERENCE/APLICACION



GDL 350.29

EATON 125.737
BH1X 75 44 BA

FORD 1722 / 1723 / 2422 / 2423 /
2428 / 2429
APPLICATION BOX EATON 9M
ES11 209



GDL 350.32

EATON 125.596
BA1X 7544 AA

FORD 1317 / 1319 / 1419 / 1517 /
1519 / 1717 / 1719
APPLICATION BOX EATON 6M FS 5406 A



GDL 350.24

1489891080

DUCATO JTD / BOXER / JUMPER (10...)

HYUNDAI

CLUTCH FORK

REFERENCE/APLICACION

GDL 350.16



4144344001

H 100

MITSUBISHI

CLUTCH FORK

REFERENCE/APLICACION

GDL 350.16



4144344001

L 200, L300

GDL 350.06



EATON 997160 125731 125743
88HU 7541 AA
BG1X 7544 AA
E7HT 541 AA
2RM 141.861

ROLLED FORK
PLATEAU SACHS 380 mm
PLATEAU EATON 365 mm
WITH SMALLER ROLLED 19 mm
V.W 12170 BT / 12180 / 14150 / 14170 BT /
14180 / 14220 / 16170 / 16220 / 16300 / 24220 /
24250 / 35300

KTG 350.06 A



EXG 351



EXG 352



SET WITH 2 SLIDING BUSH INGS
02 SLIDING PINS
APPLICATED TO FORK GDL 350.06
SMALLER ROLLED 19 mm

TJG 141.865

SHOT SHAFT OF CLUTCH APPLICATED TO TH FORK
GDL 350.06

TJG 141.863 2TC 141.863

LONG SHAFT OF CLUTCH APPLICATED TO THE FORK
GDL 350.06



GDL 350.08

09.302.935
EATON

D 11000, D 12000, D 14000, D 22000
FROM 1985 MODERN



GDL 350.09

00.839.239
EATON

A 60, C 60, D 60, D 70
TILL 1984

GDL 350.10



007.363.694
EATON

A 10, A 14 - C 10, C 14 - D 10, D 20, D 40

IVECO
CLUTCH FORK

GDL 350.06



EATON 997160
997152, 125743, 125731
IVECO 503101155

PLATEAU SACHS 350 mm, 380 mm
SMALLER ROLLED 19 mm

KTG 350.06 A



EXG 351



EXG 352



SET WITH 02 SLIDING PINS, 02 SLIDING BUSHINGS
SMALLER ROLLED 19 mm
APPLICATION FORK GDL 350.06

TJG 141.865

SHORT SHAFT OF CLUTCH APPLICATED TO THE FORK
GDL 350.06

TJG 141.863 2TC 141.863

LONG SHAFT OF CLUTCH APPLICATED TO THE FORK
GDL 350.06

GDL 350.01



327.250.1213

MBB LPO 1111, 1113 LONG CLUTCH FORK

GDL 350.02



352.250.0113

MBB OM 352, OM OM 352 A, OM 362, 1313, 1513, 2213, 2215, CLUTCH FORK

GDL 350.03



381.254.0208

MBB OF 364, OM 366, L - 1318, 1518, 2318 HORQUILLA DE EMBRAGUE

GDL 350.04



970.254.0308
970.254.0408
970.254.0508

MBB MOTOR ELETRONIC GEARSHIT G85
6 MARCH E G 60
L1417 1725 ATEGO ELECTRONIC
APPLICATED SHAFT EXG 356

KTG 350.04 A



000 254 0017

SET WITH 01 SPHERICAL BUSHING
02 NYLON BUSHINGS, 02 INTERNAL RINGS
02 EXTERNAL RINGS
MBB OH 1625 1628
APPLICATED TO THE FORK
GDL (350.04)

EXG 356



679.254.0106
697.254.0106

SHAFT OF CLUTH FORK
MBB OH 1625, OH 1628,
LS 1929, 1932, 1933, 1934, 1935, 1941
APPLICATED TO THE GDL (350.04)

GDL 350.11



386.250.0013

HPN 1521 - 1618 - 1620 - 1621 - 1723
OF 1417 1721 1722
APPLICATED SHAFT EXG 355
BUS MBB

KTG 350.11 A



382.250.0113

SET WITH: 02 BUSHINGS OF NYLON,
01 SPHERICAL BUSHING
APPLICATED TO THE FORK GDL (350.11)

EXG 355



386.254.0006

SHAFT OF CLUTH FORK MBB OF 1618,
1620, 2630
L 1218, 1418, 1521, 1620, 1621
APPLICATION FORK GDL 350.11

GDL 350.12



388.250.0513

MBB OH 1625 L, OH 1628 HL, LS 1929,
LS 1935, LS 1941
APPLICATED SHAFT EXG 353 / 354

EXG 353



388.254.0006

SHORT SHAFT OF CLUTCH FORK MBB LS 1935,
1941, OH 1625 L, OH 1628 L
APPLICATED TO THE FORK GDL (350.12)

KTG 350.12 A



SET WITH 01 SPHERICAL BUSHING, 02 BUSHING NYLON
2 INTERNAL RINGS, 02 EXTERNAL RINGS
WITH SMALLER BUSHING APPLICATED TO FORK GDL (350.12)
(388.250.0513)

EXG 354



388.254.0106

LONG SHAFT OF CLUTCH MBB LS
1935, 1941, 2635
APPLICATED TO THE FORK GDL (350.12)

GDL 350.19



655.254.0708
655.250.1513

AXOR G 210, G 211, G 240, LS 1938,
1938 S, 1944, 2544, 2638, 2640, 2644,
2726, 2729
APPLICATED SHAFT EXG 357
(BI DISC AND MONO DISC)

KTG 350.19 A



SET WITH: 01 SPHERICAL BUSHING, 02 BUSHINGS OF NYLON,
2 INTERNAL RINGS, 02 EXTERNAL RINGS WITH BIGGER
BUSHING APPLICATION TO THE FORK GDL (350.19)

EXG 357



655.254.0206

SHAFT OF CLUTCH FORK
MBB AXOR 1933 / 1944 / 2035 / 2040 / 2044
2533 / 2544 / 2638 / 2640 / 2644 / 2726 / 2729
APPLICATED TO THE FORK GDL (350.19)

KTG 350.19 B



SET OF WASHERS AND LOCKERS
APPLICATED IN THE SHAFT EXG - 357

GCL 423.01



344.260.0130
321.260.2630

TRIGGER FORK 2ª AND 3ª MARCH GEARSHIFT MBB
OLD G-3.36 AND G-3.40
L-1113, 1313, 1513, 2013, 2213
SUPPORT MOVILE (STEEL)

GCL 445.02



321.260.2730

TRIGGER FORK 4ª AND 5ª MARCH GEARSHIFT
MBB OLD G-3.36 AND G-3.40
L-1113, 1313, 1513, 2013, 2213
SUPPORT MOVILE (STEEL)

GCL 445.04



302.265.0702
384.265.0402

TRIGGER FORK 4ª AND 5ª MARCH
GEARSHIFT MBB
MODERN G-3.50 AND G-3.60
L-1214, 1418, 1618, O-370, O-371
SUPPORT MOVILE (STEEL)

GCL 423.03



302.265.0602

TRIGGER FORK 2ª AND 3ª MARCH
GEARSHIFT MBB
MODERN G-3.50 AND G-3.60
L-1214, 1418, 1618, O-370, O-371
SUPPORT MOVILE (STEEL)

MBB

GEARSHIFT FORK FIXED

REFERENCE/APLICACION

PGC 400.00



384.265.0049

SLIDING PIN APPLICATED TO ALL MODELS
OF GEARSHIFT FORKS MZK
PACK (STEEL)

GCL 523.01



344.260.0130
321.260.2630

TRIGGER FORK 2ª AND 3ª MARCH GEARSHIFT
MBB OLD G-3.36 E G-3.40
L-1113, 1313, 1513, 2013, 2213
SUPPORT FIXED

GCL 523.03



302.265.0602
384.265.0602

TRIGGER FORK 2ª AND 3ª MARCH
GEARSHIFT MBB
MODERN G-3.50 Y G-3.60
L-1318, 2218, 1214, 1418, 1618 , O-370, O-371
SUPPORT FIXED

GCL 545.02



321.260.2730

TRIGGER FORK 4ª AND 5ª MARCH
GEARSHIFT MBB
OLD G-3 - 36 - 40 MBB L-1113, 1313, 1513,
2013, 2213
SUPPORT FIXED

GCL 545.04



302.265.0702
384.265.0402

TRIGGER FORK 4ª AND 5ª MARCH GEARSHIFT
MBB MODERN G-3 - 50 - 60
L-1214, 1418, 1618, O-370, O-371
SUPPORT FIXED

GCL 401 R



345.260.0130
383.260.0730

TRIGGER FORK 1ª AND REVERSE
GEARSHIT MBB G-3.50 E G-3.60
SUPPORT FIXED

SCANIA

CLUTCH BEARING

REFERENCE/APPLICATION



GDL 350.27

CLUTCH FORK COMPLETE
SCANIA (WITH SHAFT) SERIE 4
ORIGINAL NUMBER 1479577 / 1479578
1543645 / 173306
APPLICATION SET KTG 350.17-A

KTG 350.27 B

SET SHAFT OF THE FORK
APPLICATION FORK
GDL 350.27



KTG 350.17 A 1753479 / 1335485

SET CLUTCH FORK REPAIR
APPLICATED TO THE FORK GDL 350.27
APPLICATION GEARSHIFT 6 / 8 / 10 MARCH



VOLVO

CLUTCH FORK, SHAFT AND SETS

REFERENCE/APPLICATION

GDL 350.14



EATON 125743
125.731
2133.3869

ROLLED FORK REINFORCED VOLVO
PLATEAU SACHS 365/380mm, PLATEAU EATON 395mm
WITH BIGGER ROLLER 24,95 mm
APPLICATED TRANSMISSION FS-6203 AND 6306

KTG 350.14 A



SET WITH 02 SLIDING PINS AND 02 SLIDING BUSHINGS
SMALLER ROLLED 19mm
APPLICATION TO THE FORK GDL 350.14

EXG 351



TJG 141.865

SHORT CLUTCH SHAFT APPLICATED TO THE FORK
GDL 350.14

EXG 352



TJG 141.863 2TC 141.863

LONG CLUTCH SHAFT APPLICATED TO THE FORK
GDL 350.14

VOLKSWAGEN

CLUTCH FORK, SHAFTS, SETS

REFERENCE/APPLICATION

EATON 997078
2RP141.861 A
TJG 141.861 A
TF3 141.861
BGIX 7544 A
2RM 141.861

GDL 350.05



14150, 14200, 14250, 16170,
16180 CO, 16210, 16220,
16300, 17210 OD, 24220, 24250
BUS 16180, 16210
NO ROLLED (FIXED)

EXG 351



TJG 141.865

SHORT CLUTCH SHAFT APPLICATED TO THE FORK
GDL 350.05

EXG 352



TJG 141.863 2TC 141.863

LONG CLUTCH SHAFT APPLICATED TO THE FORK
GDL 350.05

EATON 997152, 997160,
125743, 125731
2S2 141.719 A, 2RM 141.861
88HU 754 AA, BG1X 7544 A
E7HT 7541 A

GDL 350.06



TRANSMISSION APPLICATED FS 6209 / 6306
SMALLER ROLLED 19 MM
VW BUS 12170 BT, 14170 BT
VW TRUCK 12180, 13170, 13180,
14150, 14180, 15170, 15180, 16170,
16220, 16300, 17210, 24220, 35300

EXG 351

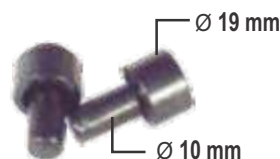


TJG 141.865

SHORT CLUTCH SHAFT APPLICATED TO THE FORK
GDL 350.06

KTG 350.06 A

SET WITH 02 SLIDING BUSHINGS, 02 SLIDING PINS
SMALLER ROLLED 19 MM
APPLICATED TO THE FORK GDL 350.06



EXG 352



TJG 141.863 2TC 141.863

LONG CLUTCH SHAFT APPLICATED TO THE FORK
GDL 350.06

GDL 350.13



2RO 141.719-A
77TU 7515-A
BE2Y 7515-A
TPH 141.857

VW 7.90, 8.140, 9.150
7-100, 8-120, 8-140, 8-150, 9-150, 12-140
LONG STEM 308 mm
DELIVERY 5.140 EOD, 9.150 EOD, 8.140 CO

GDL 350.14



KTG 350.14 A



SET WITH 02 SLIDING PINS AND 02 SLIDING
SMALLER ROLLED 19 mm
APPLICATED TO THE FORK GDL 350.14
2S2 141.719 A

EATON 125743
125731

2 RM 141.861
2S2 141.719 A
2D2 141.719 A
2S2 141.719 D

16170, 16220, 24220, 35300 COM MOTOR EURO 5
14180, 14220, 17180, 17220, 17240, 24250
(REINFORCED ROLLED CLUCH 24,95 mm)
APPLICATED SHAFT EXG 351 - 352

EXG 351



TJG 141.865
SHORT CLUTCH SHAFT APPLICATED TO THE FORK
GDL 350.14

EXG 352



TJG 141.863 2TC 141.863
LONG CLUTCH SHAFT APPLICATED TO THE FORK
GDL 350.14

GDL 350.15



2WO 311.551

CLUTCH BEARING V.W BUS WITH MOTOR
FRONT 15180 E OD, 15190 E OD, 17210 E OD
NO ROLLED

GDL 350.21



2T2 141.719
2T2 141.719 E
2T2 141.719 D
2T2 141.719 F
ZF 6060 268 042

CLUTCH BEARING CONSTELLATION 13-180 E, 15-180 E
17-240 E, 17-250 E, 17-280, 24-250 E, 24-280 WITH ROLLED V.W BUS CX ZF 9 S 1110 TD

KTG 350.21 A



GDL 350.30

VW BOX ZF 15180 OD, BUS
NUMBER VW 2WO0311549
NUMBER ZF 6060368057



KTG 350.30 A

SET REPAIR CLUTCH BEARINGS V.W.
BUS 15.180 17.230-OD
APPLICATED TO THE CLUTCH
GDL (350.30)



GDL 350.22



2 T2 141.720
EATON 125.699

CLUTCH BEARING CONSTELLATION EURO
5, 13-190, 15-190, 17-190, 17-260 - WITH ROLLED
APPLICATED TO THE TRANSMISSION
FSB - 5406 / 6406

KTG 350.22 A



SET REPAIR CLUTCH BEARINGS V.W
CONSTELLATION EURO 5 13-190, 15-190
APPLICATED TO THE CLUTCH GDL (350.22)

KTA 5101



SET OF LOCKERS PLATEAU
RING 4 TIPS 80mm
SACHS 350/380 mm 04
COMPONENTS
(DISH SPRING, STEEL RINGS,
FLAT WASHER, LOCKER RING)

APPLICATION (AGRALE, FORD, VOLVO, IVECO, V.W)

KTA 5102



SET OF LOCKERS PLATEAU
RING 6 TIPS 90mm
SACHS 430mm 04 COMPONENTS
(DISH SPRING, STEEL RINGS,
(MUELLE PLATO, ANILLO DE
FLAT WASHER, LOCKER RING)
APPLICATION (SCANIA, VOLVO, MBB
388055, 3192219, 000 252 0656

KTA 5103



SET OF LOCKERS PLATEAU
V.W LUK 80mm
350/365/380mm

KTA 5104



SET OF LOCKERS PLATEAU
70mm FLAT RING ASSEMBLED
EATON 04
COMPONENTS 365 / 395 mm

KTA 5105



SET OF LOCKERS PLATEAU
70mm EATON 03 COMPONENTS
ASSEMBLED ROUND RING
365/395mm

KTA 5106



SET OF LOCKERS PLATEAU
(CAT FACE)
MBB 000 252 06 46
SCANIA 1799126
APPLICATED SYSTEM
FAST COUPLING
430mm

KTA 5107



SET OF LOCKERS PLATEAU
MBB 709 / 712 / 809 / 812 / 814 /
912 / 914
000 252 00 46
250 / 280 / 311mm

KTA 5112



SET OF LOCKERS PLATEAU
APPLICATION VALEO SYSTEM
MBB AXOR
MBB - 1933 / 1938 / 1944
2036 / 2038 / 2041 /
OM - 447-LA
OM - 906 - LA ELECTRONIC
OM - 926 - LA ELECTRONIC

KTA 5113



SET OF LOCKERS PLATEAU
VALEO SYSTEM
SCANIA
VOLVO
IVECO
805712
1797669

HOUSING EQUIVALENCE TABLE

N/MZK	N/NWO	N/Sachs	N/Eaton	N/Original	Page
RCS-5007	RDS-1007	3358		000 254 00 20	17/25
RCL-5007	RDL-1007			900236301	25
RCS-5009	RDS-1009	3367		AL 2116	9/17/29
RCH-5010	RDL-1429		1271010		7/10
RCS-5015	RDS-1015			090.0602.021	9/24
RCS-5016	RDS-1016			3585431	10/17
RCS-5019	RDS-1009			6003.033.035.001	7/25
RCH-5020	RDC-1020	3384		320 250 00 15	18
RCS-5020	RDS-1020	3384		343 250 00 10	18
RCH-5021	RDL-1021	3385		304 250 03 15	18
RCS-5021	RDS-1021	3385		335 254 00 10	18
RCH-5029			1271029 / 1251040	F 81A7548AC	10
RCL-5035	RDS-1035	3367	125802	6003.033.035,001	7/10/14/29
RCL-5036	RDC-1036			94.609.464	14
RCL-5037	RDC-1037	3373		2SK 141165	11/29
RCL-5038	RDC-1038	3387	125801	2SL 141165	11
RCH-5040		3040	125919	2PO 141165	7/11/29

N/ MZK	N/ NWO	N/ Sachs	N/ Eaton	N/ Original	Página
RCL-5061	RDL-1061			93D2934	14
RCH-5200	RDL-1600			81781200	26
RCH-5300	RDL-1300	3358		321 250 05 15	18
RCH-5303	RDL-1303			6013.033.035.001	7
RCH-5305	RDL-1305	3324		002 250 46 15	19
RCH-5305-TB	RDL-1305	3324		002 250 46 15	19
RCH-5306	RDL-1306	3330		001 250 03 15	19
RCH-5307	RDL-1307	3327		000 250 19 15	19
RCH-5308	RDL-1308	3310		000 250 17 15	19
RCH-5308-TB	RDL-1308	3310		000 250 31 15	20
RCH-5311	RDL-1311	3329		000 250 76 15	20
RCH-5312	RDL-1312			340 250 13 12	20
RCH-5314-AC	RDL-1314	3353		1393163/1386160	24
RCH-5315	RDL-1315	3355		1655289/1669912	26
RCH-5316	RDL-1316	3368		267156/1527693	26
RCH-5317	RDL-1317	3374		1655287	26
RCH-5318	RDL-1318	3372		1655288	26
RCH-5319	RDL-1319	3060/3360		1672944/1655843	27
RCH-5320-AC	RDL-1320	3325	125807	71444597	15/20
RCH-5321-AC	RDL-1321	3345	125653	001 250 92 15	20
RCH-5322	RDL-1322	3386		1527695	27
RCH-5323	RDL-1323	3323	125800	T-13141151	9/15
RCH-5324-AC	RDL-1324	3383		001 250 07 15	21
RCH-5325	RDL-1325	3363	125637	1655825/1655732	27
RCH-5326	RDL-1326	3326		000 250 95 15	21
RCH-5328	RDL-1328			000 250 70 15	21
RCH-5329-AC	RDL-1329	3352	125708	1319 344/1407430	24
RCH-5331	RDL-1331			001 250 09 15	21
RCH-5332-AC	RDL-1332	3345	125653	001 250 05 15	21
RCH-5336-AC	RDL-1336	3366	125652	4210203 15	15
RCH-5337	RDL-1337	3337/3338		001 250 04 15	22
RCH-5338-AC	RDL-1338	3390		001 250 06 15	22
RCH-5347	RDL-1428	3347	125783	6020.0030.16005	8
RCH-5348-SM	RDL-1348	3358		2Z0141707-A	11
RCH-5349-SM	RDL_1349	3346		E3HN7580-AA	11/30
RCH-5350	RDL-1350			2RP 141037-C	12/30
RCH-5352	RDL-1352	3365		1668930/1668938	27
RCH-5356-AC	RDL-1356	3377	125634/125635	002 250 41 15	22
RCH-5360	RDL-1360	3359		2RP 141035-C	12/30
RCH-5360-AC	RDL-1360-AC	3359			8/12/15/27/30
RCH-5360-SM	RDL-1360-SM	3348	125562	2ZO141707-A 1	12/31
RCH-5363-SM	RDL-1363			2RP141037-B	31
RCH-5365	RDL-1365	3389/3722	125790	6007.0030.48005	8
RCH-5366-AC	RDL-1366	3396	125710	2T2 141165A	31
RCH-5372	RDL-1372	3375/3075	125708	1367604 / 352750	24
RCH-5378-AC	RDL-1378	3388		001 250 06 15	22
RCH-5380	RDL-1380	3371		2RO 141211	31
RCH-5390-AC	RDL-1424	3390	125946	002 250 63 15	22
RCH-5391-AC		3391		50310133 15	16
RCH-5394	RDL-1394	3308	125643	1672964/20569161	28
RCH-5396-AC	RDL-1396		125641	20722523	28
RCH-5397-AC	RDL-1397	3309	125806	001 250 99 15	23
RCH-5398				2T141165-H	31
RCH-5498-AC		3398	125944	2U2141165-B	32
RCH-5399	RDL-1431	3399		6025.003.025.005	8/16
RCH-5400-AC		3400	125910	5949890688	8/16
RCH-5401		3401			16

N/ MZK	N/ NWO	N/ Sachs	N/ Eaton	N/ Original	Page
RCH-5422-AC	RDL-1422	3350	125709	1728165/1499770	24
RCH-5431-AC		3100/3431	125755/1251050	457548-AC	12
RCH-5498-AC		3398			17
RCH-5522-AC					25
RCH-5522					25
RCH-5529					13
RCH-5562-SM			125562		13/32
RCH-5563			125563/125715		9/13/15/28/32
RCH-5565			125655	2T2 141 165-K	32
RCH-5566		3344	125916		32
RCH-5567				Kit Sachs 6295	28
RCH-5597	RDL-1427	3397	125793	2T2141165-E	33
RCH-5635			125635		23
RCH-5650-SM			125650		13/33
RCH-5654			125654		23
RCH-5655			125655		28
RCH-5713			125713		13
RCH-5716			125716		14/29/33
RCH-5717-SM			125717		14/33
RCH-5722 -AC				Valeo 830010	25
RCH-5739			3739		33

ACTUATORS

RCY-7843	RDL-1375	3361		002 250 66 15	23
RCY-7844				002 254 25 08	23

FORKS, SHAFT, CLUTCH SETS

GDL-350.01		327 250 12 13 36	36	GCL-523.03	302 265 06 01 38	38
GDL-350.02		352 250 01 13 36	36	GCL-545.02	321 260 2730 38	38
GDL-350.03		381 254 02 08 36	36	GCL-545.04	302 265 07 02 38	38
GDL-350.04		970 254 03 08 36	36	EXG-351	TJG 141865	34/35/39/40
GDL-350.05	997078		33/39	EXG-352	TJG 141863	34/35/39/40
GDL-350.06	997160		35/39	EXG-353	388 254 00 06	37
GDL-350.07		TEG-141857 34	34	EXG-354	388 254 01 06 37	37
GDL-350.08		09305935 35	35	EXG-355	386 254 00 06 36	36
GDL-350.09		00839239 35	35	EXG-356	679 254 01 06 36	36
GDL-350.10		007363694 35	35	EXG-357	655 254 02 06 37	37
GDL-350.11		386 250 00 13 36	36	KTG-350.04-A		36
GDL-350.12		388 250 05 13 37	37	KTG-350.06-A		35/39
GDL-350.13		BE2Y7515 A 34/40	34	KTG-350.11-A		36
GDL-350.14	125743		39/40	KTG-350.12-A		37
GDL-350.15		2WO 311551 40	40	KTG-350.14-A		39/40
GDL-350.16		4144344001 34	34	KTG-350.17-A		39
GDL-350.19		655 254 07 08 37	37	KTG-350.19-A		37
GDL-350.21		2T2 141719/E/D/F	40	KTG-350.19-B		37
GDL-350.22	125699	2T 2 141720 40	40	KTG-350.21-A		40
GDL-350.24		1489891080 33	34	KTG-350.22-A		40
GDL-350.27		173306 39	39	KTG-350.27-B		39
GDL-350.30			40	KTG-350.30-A		40
GDL-350.29	125737	BH1X744-BA 34	34	KTA-5101		41
GDL-350.32	125596	BA1X7544-AA 34	34	KTA-5102		41
PGC-400.00		384 265 00 49 38	38	KTA-5103		41
GCL-401.R		345 260 01 30 38	38	KTA-5104		41
GCL-423.01		344260 01 30 38	38	KTA-5105		41
GCL-423.03		302 265 0602 38	38	KTA-5106		41
GCL-445.02		321 260 27 30 38	38	KTA-5107		41
GCL-445.04		302 265 07 02 38	38	KTA-5112		41
GCL-523.01		344 260 01 30 38	38	KTA-5113		41



AUTOMOTIVE INDUSTRY

www.mzkrolamentos.com.br

THE INDUSTRY MANUFACTURE CLUTCH HOUSINGS,
SLIDING CUBES, SHAFT FOR CLUTCH FORK
GEARSHIFT CLUTCH, CLUTCH FORKS, SETS FOR
CLUTCH FORKS, SET LOCKERS FOR HOUSINGS, CLUTCH HOUSINGS
UTILITY AND HEAVY LINE, FOLLOWING STRICT QUALITY STANDARDS.

QUALITY AND SERIOUSNESS

Projects developed according
to OEM Specification.

ADDRESS:

RUA CAMPINAS Nº 2145 - VILA CARVALHO
CEP: 14075-070 - RIBEIRÃO PRETO-SP - BRAZIL

Phone: +55 16 3969-8877

e-mail: exportacao@mzkrolamentos.com.br

